

Agenda for Social Equity 2074

The Integrating Framework for a Durable, Equitable Future



We share a powerful consensus on *what* we must achieve.



UN Agenda 2030

The 17 Sustainable
Development Goals.



AU Agenda 2063

The Africa We Want.



European Green Deal

Europe's climate
neutrality ambition.

These landmark agendas define our collective aspirations for
a prosperous, inclusive, and sustainable world.

Yet, siloed implementation fragments impact and hinders long-term success.

1. Fragmented Interventions

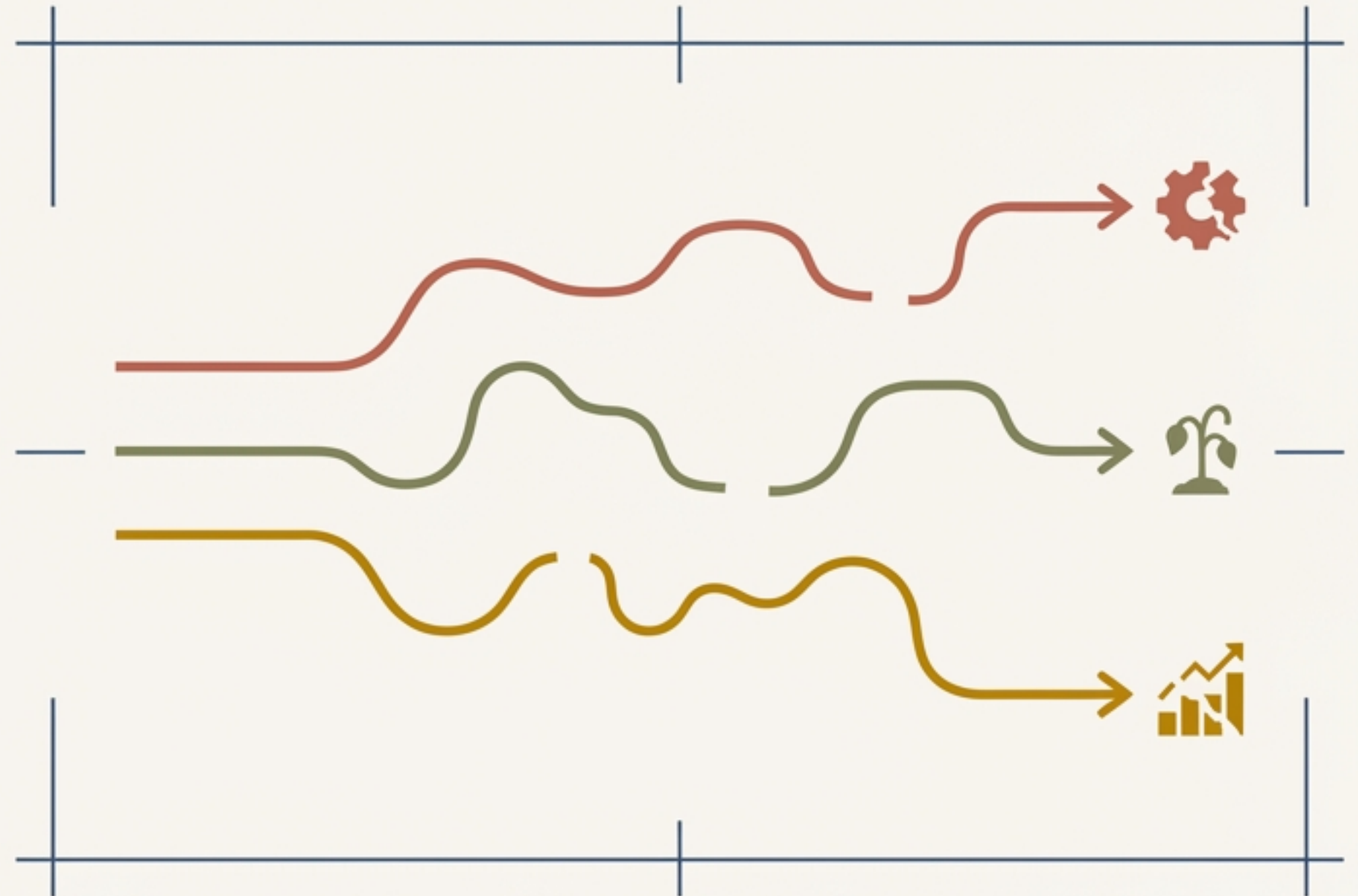
A lack of synergy across sectors leads to duplicated efforts and missed opportunities for compound value.

2. Vulnerability to Shocks

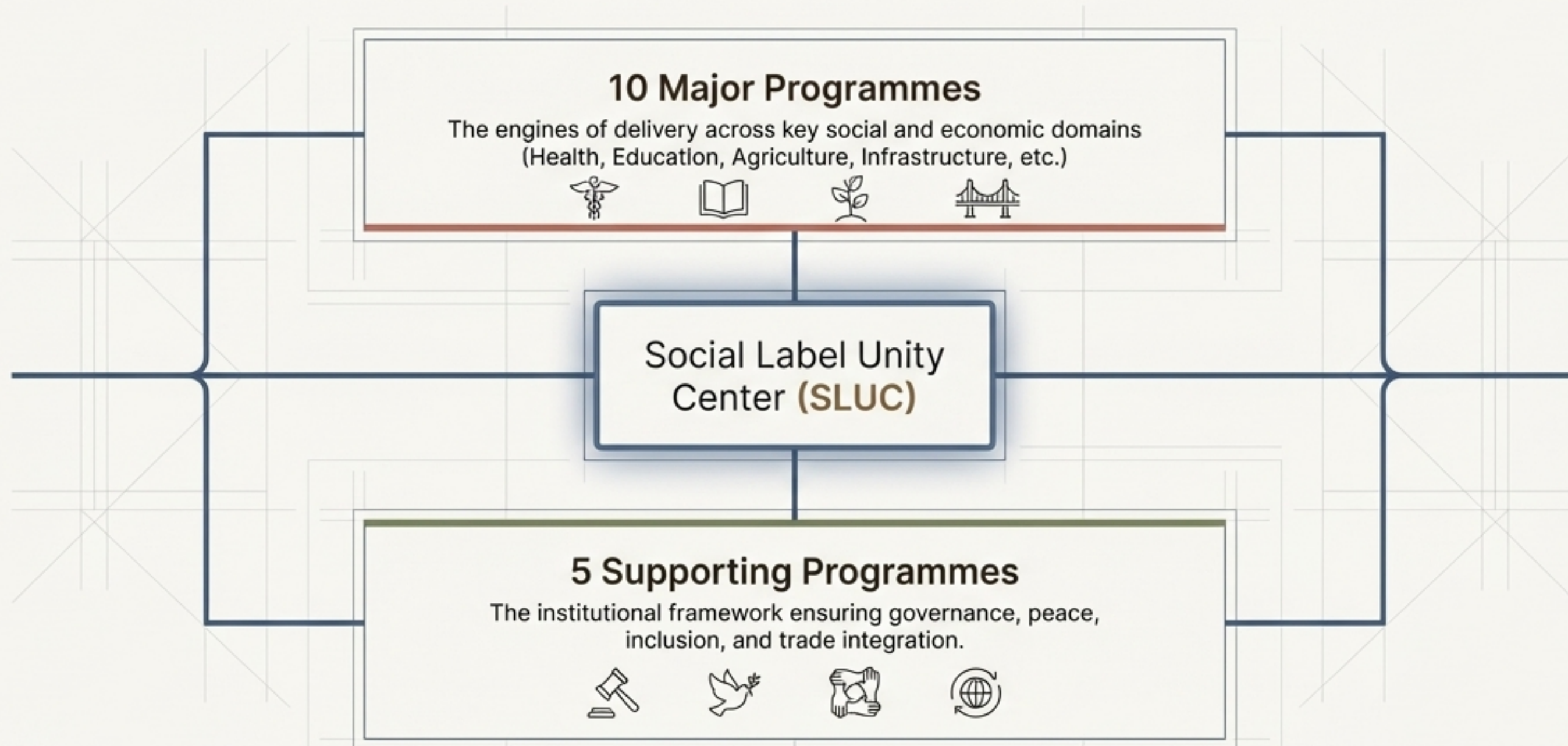
Progress is often reversed because outcomes do not 'persist beyond electoral cycles and exogenous shocks.'

3. The Implementation Gap

A missing operational 'how' to connect the aspirational 'what' of existing agendas.



SLUC: A Portfolio Designed as a Systems Integration Layer



A portfolio that **converts infrastructure, skills, and institutional reform** into measurable and durable social equity.

Delivering on Goals While Building a Lasting Foundation

The Engines of Delivery (10 Major Programmes)



HIRC: Health Initiative for Resilient Communities



EEN: Educational Enrichment Network



EVHEI: Empowerment through Vocational and Higher Education



SAP: Sustainable Agriculture for Prosperity



ETI: Empowerment through Infrastructure



TFT: Technology for Tomorrow



EESG: Economic Empowerment for Sustainable Growth



CPIP: Cultural Preservation and Innovation Program

*and two others as defined in the full portfolio

The Framework for Success (5 Supporting Programmes)



AGCEI: African Governance and Civic Empowerment Initiative



PCRN: Peacebuilding and Conflict Resolution Network



WYEH: Women and Youth Empowerment Hubs

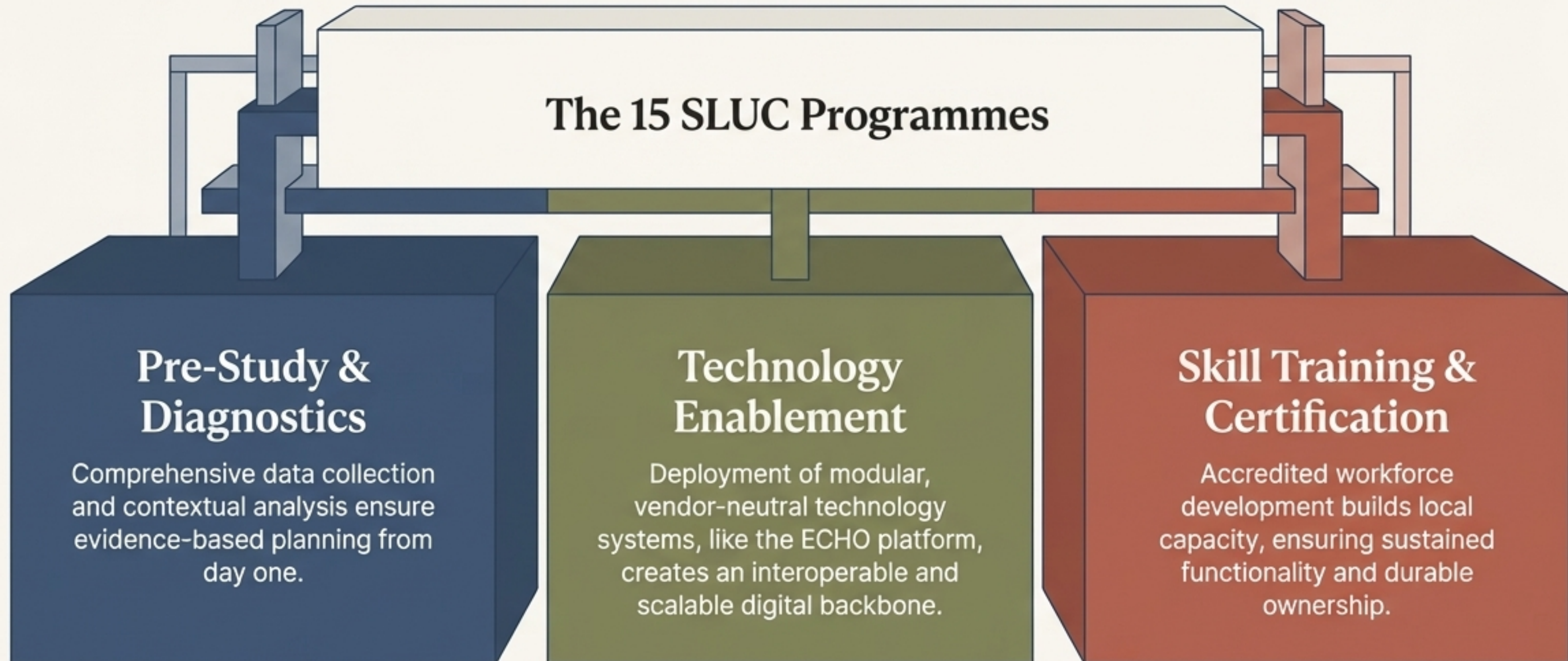


IAT-EIP: Intra-African Trade and Economic Integration Project

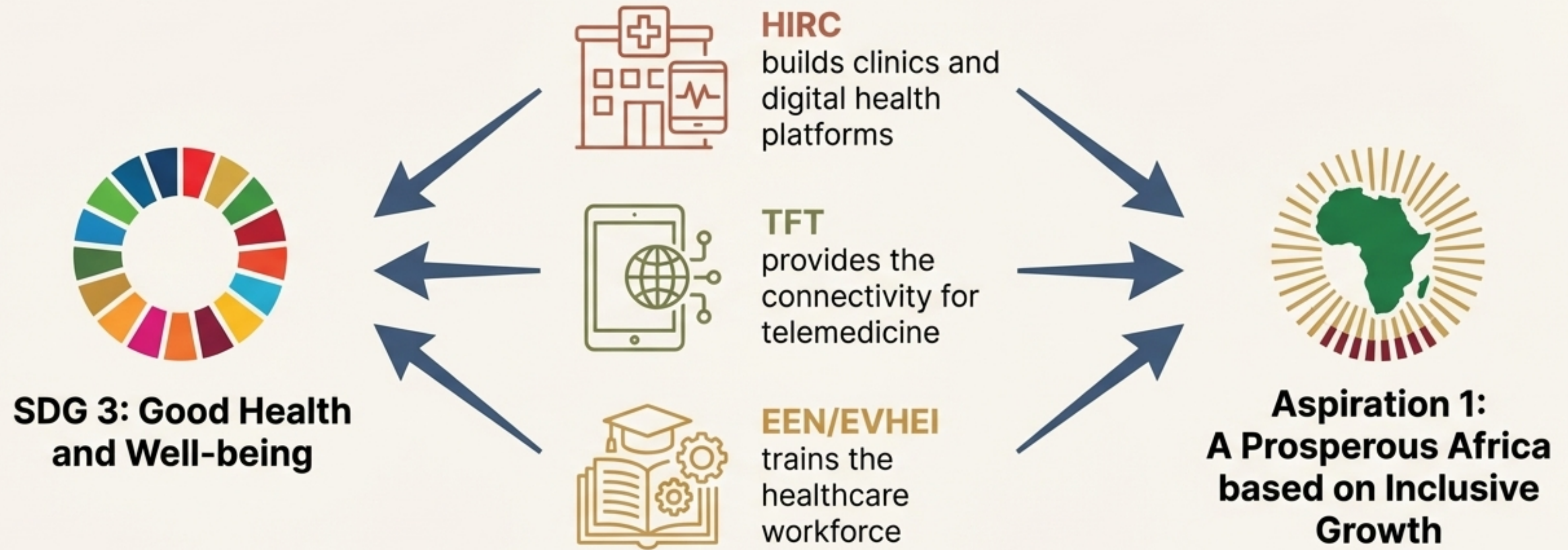


RPGII: Regional Partnership and Global Influence Initiative

The SDEP Backbone: Ensuring Every Programme is Built on Evidence, Technology, and Skills



A Unified Engine for Multiple Mandates.



The SLUC portfolio is precision-engineered to deliver on multiple mandates simultaneously, creating efficiency and compounding impact.

The Synergy Effect: Creating Outcomes Greater Than the Sum of a Project's Parts



SAP

The Sustainable Agriculture for Prosperity programme increases crop yields and climate resilience at the farm level.

+



ETI

The Empowerment through Infrastructure programme builds the transport corridors needed to move produce from farm to market efficiently.

+



IAT-EIP

The Trade & Integration programme reduces border clearance times and harmonizes standards, enabling cross-border trade.

=



Compound Outcome: A complete, resilient, and efficient farm-to-market value chain that boosts food security and creates sustainable livelihoods.

A System Built on Radical Transparency and Accountability.

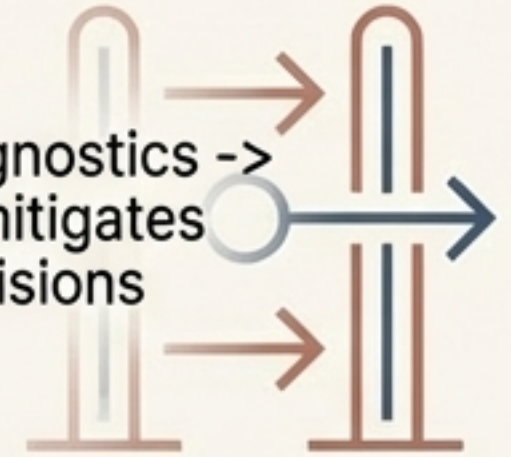
1. Neutral Oversight (GSIA & REC Coordination)

Legally constituted entities at the national level (NIUs) are coordinated by Regional Economic Communities (RECs) and overseen by the Global Social Impact Alliance (GSIA) to safeguard neutrality and enforce standards.



2. Phase-Gate Delivery

A disciplined, sequenced model (diagnostics -> institutional design -> deployment) mitigates premature scale-up and ensures decisions are evidence-based.



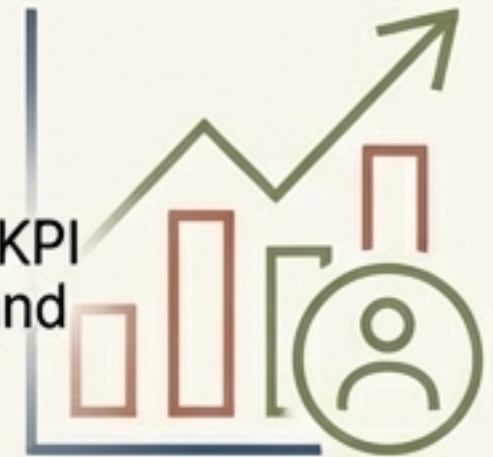
3. Independent QA/QC

An Independent Quality Assurance and Quality Control Unit verifies technical quality and compliance at each gate review, with findings published.



4. Public Scorecards & Civic Oversight

Open-data portals and standardized KPI scorecards enable citizen oversight and ensure public accountability.



A Financial Architecture for a Fifty-Year Horizon

A blended finance model, structured to match capital to risk at each phase of implementation.

1. Phase 1: Public & Concessional Capital

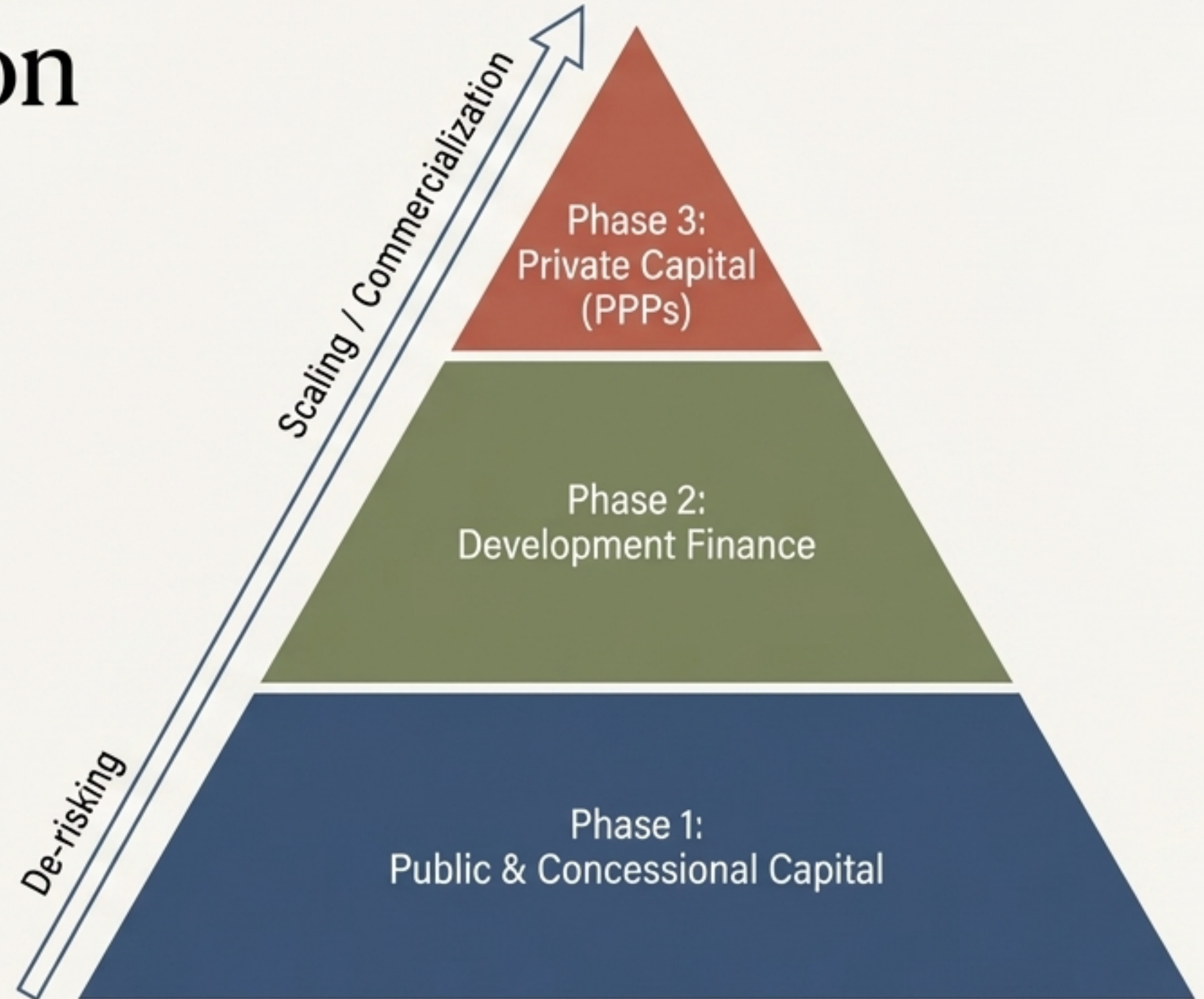
National budget allocations and grants anchor the mission, covering essential early-stage diagnostics, governance compacts, and legal harmonization.

2. Phase 2: Development Finance

Concessional loans from partners like the African Development Bank (AfDB) scale proven infrastructure, technology, and training systems.

3. Phase 3: Private Capital (PPPs)

As performance evidence accumulates and risks decrease, Public-Private Partnerships (PPPs) are used to "crowd-in" private investment for commercialization and market activation.



Our Programmes Are Designed to Systematically Remedy Structural Exclusion.



WYEH (Women and Youth Empowerment Hubs)

Institutionalizes safe, governed spaces that provide bundled services, finance, and leadership pathways.



EESG (Economic Empowerment for Sustainable Growth)

Expands access to capital for small and medium enterprises and embeds fair-trade practices.

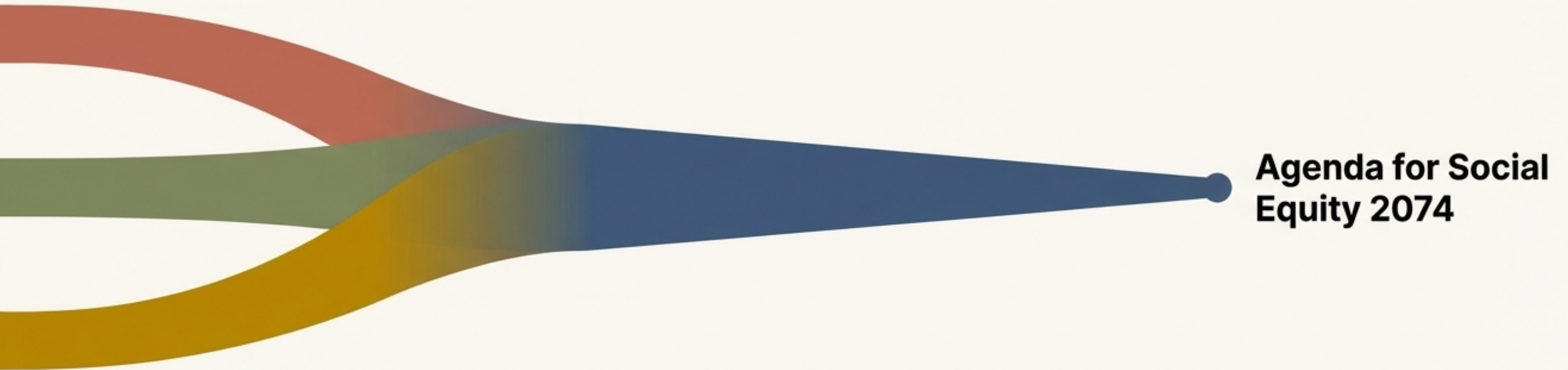


AGCEI (African Governance and Civic Empowerment Initiative)

Ensures civic participation and accountability, giving marginalized communities a voice in decision-making.



The Endgame: A State of Durable Equity, Achieved by Building a System That Lasts.



Agenda for Social Equity 2074 is not another agenda to implement. It is the fifty-year **Equity Dividend** we achieve by operationalizing today's agendas correctly. It is the legacy of a system designed for integrity, built for resilience, and committed to inclusion from day one.

Our Work is Anchored in Non-Negotiable Principles.

1. Legality and Transparency

All material decisions are documented, auditable, and open to lawful public scrutiny.

2. Equity by Design

Women, youth, and marginalized communities are not afterthoughts; they are design constraints and success conditions.

3. Lifecycle Stewardship

Operation and maintenance is funded, staffed, and monitored; assets are managed as obligations, not symbols.

4. Vendor Neutrality and Security

Technology stacks are interoperable and certified; procurement is competitive and transparent.

Let's Activate This Legacy, Together.

For Regional Economic Communities (RECs)

- ☰ Adopt the **SLUC Portfolio Resolution** to provide a regional mandate.
- ☰ Establish a **REC Coordination Cell** for programme sequencing and peer review.

For National Governments

- Designate a **Lead Ministry and National Implementation Unit (NIU)**.
- Ratify **Governance Compacts** to codify decision rights and safeguards.

For Development Partners & Investors

- Establish a **Blended Finance Window** to match capital to phase-specific risks.
- Co-design **Technical Facilities** to support baselines and institutional readiness.



Social Label Unity Center

Building the Architecture for a Just and Enduring Future.

www.eusl.eu
info@eusl.eu