



# SGG 15: Support for Family and Community Structures

*Strengthening the bonds that sustain social resilience.*



# The Bedrock of Stability Under Strain

## The Challenge

**The Issue:** Families and communities provide the first layer of protection and identity. However, economic pressures, migration, urbanization, and shifting norms are eroding these bonds.

**The Symptoms:** Increased social isolation, mental health challenges, and weakened civic engagement.



## The Solution: SGG 15

**The Mission:** To restore and strengthen these networks through supportive policies and inclusive services.

**Key Distinction:** This is not about rigid traditionalism. It advocates for adaptive frameworks that respect cultural diversity while responding to contemporary realities.



# Defining the Goal

**Goal Statement: To strengthen family and community structures as **dynamic systems** of care, identity, and social support, ensuring their capacity to foster **resilience**, inclusion, and equitable development across generations.**

## Core Parameters

- 'Support' refers to the deliberate design of policies, programs, and norms.
- Focus areas include intergenerational solidarity, equitable caregiving, and community-based networks.
- Context: Acknowledges families as 'evolving entities' requiring flexible approaches for diverse cultural contexts.



# Illustrative Dimensions of Support



## Early Childhood Support

Accessible childcare, parental education, and nutrition programs.



## Elderly Care Systems

Community-based care models, home support, and intergenerational programs.



## Social Connectivity

Initiatives to reduce isolation via community centers and digital platforms.



## Conflict Resolution

Mediation services and counseling to strengthen family resilience.



## Inclusive Policy Design

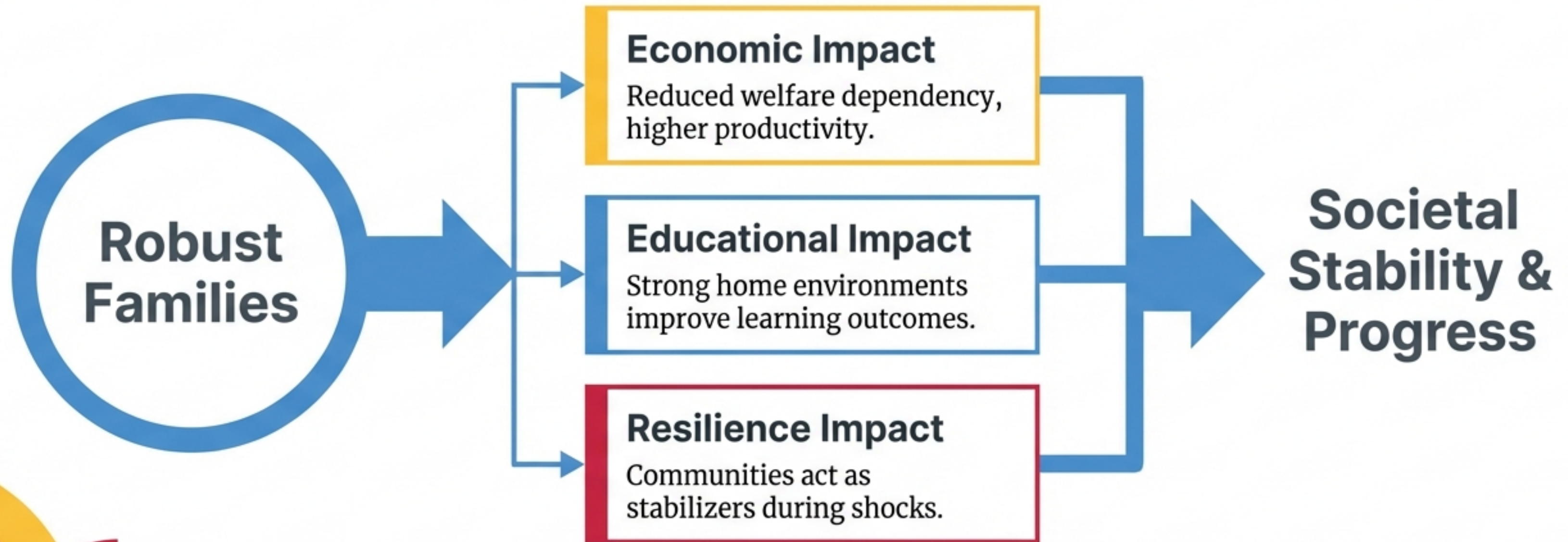
Legal frameworks recognizing diverse family structures and rights.

*Action spanning the entire lifecycle, from infancy to eldercare.*



# Strategic Rationale: Why This Matters

Strengthening family structures is not a sentimental aspiration but a strategic necessity for equitable development.





# Advocacy Objectives

*Elevating family well-being from a private matter to a public good.*



- **Policy Integration**  
Enactment of parental leave, childcare access, and eldercare frameworks.
- **Community Infrastructure**  
Development of social hubs and digital platforms to reduce isolation.
- **Public Awareness**  
Campaigns promoting intergenerational solidarity.
- **Institutional Partnerships**  
Co-creation between government, civil society, and the private sector.
- **Global Endorsement**  
Recognizing family support as a universal standard under Agenda 2074.



# Implementation Pathways (Non-Financial)

A multi-layered approach prioritizing inclusivity and adaptability without immediate reliance on financial instruments.

## **Policy Integration**

Institutionalizing supportive measures in national plans.

## **Community Infrastructure**

Establishing centers for interaction and mutual support.

## **Educational Reform**

Curricula emphasizing empathy and intergenerational values.

## **Digital Connectivity**

Inclusive ecosystems for social ties in rural areas.

## **Collaborative Governance**

Multi-stakeholder councils for co-designing programs.



# Institutional Anchoring & Ecosystem

Merriweather, Slate Grey, could added for context.



**Governments:**  
Legislation & Planning



**Private Sector:**  
CSR & Flexibility



**Civil Society:**  
Mobilization & Monitoring



# Compliance & Governance Principles



## Transparency

Public disclosure of policies, eligibility, and grievance mechanisms to foster trust.



## Accountability

Reinforced through independent audits and GSIA-led reviews.



## Inclusivity

Ensuring diverse family structures and non-traditional arrangements are recognized.



## Ethical Standards

Upholding dignity and autonomy, harmonized with human rights conventions.



*Universal Adaptability Principle: Voluntary adoption with open-access guidelines.*



# Monitoring & Advocacy Metrics

A developing & advocacy site with numient headlines in Inter Extra Bold, Slate Grey,  
Merriweather, Slate Grey – European Institutional Modern.

## Dashboard

### Policy Adoption



**Detail:** Number of national laws enacted.

### Institutional Integration



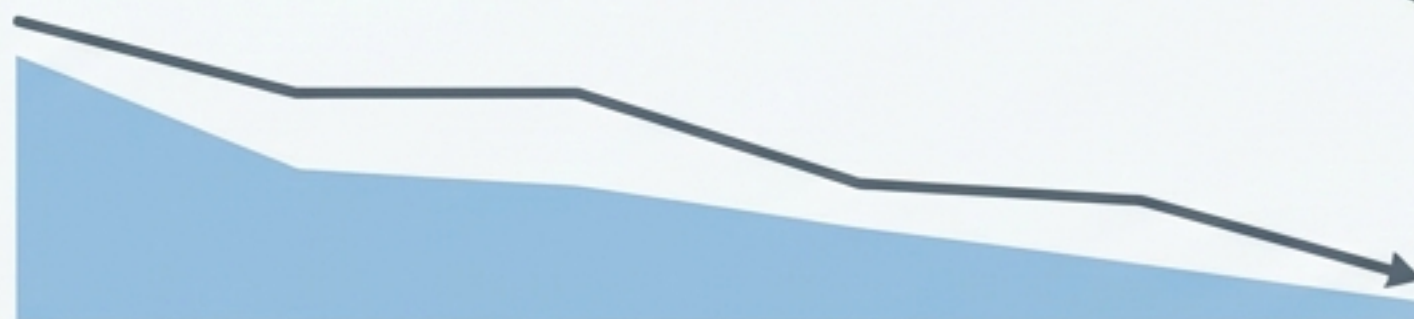
**Detail:** % of schools/workplaces with supportive policies.

### Community Engagement



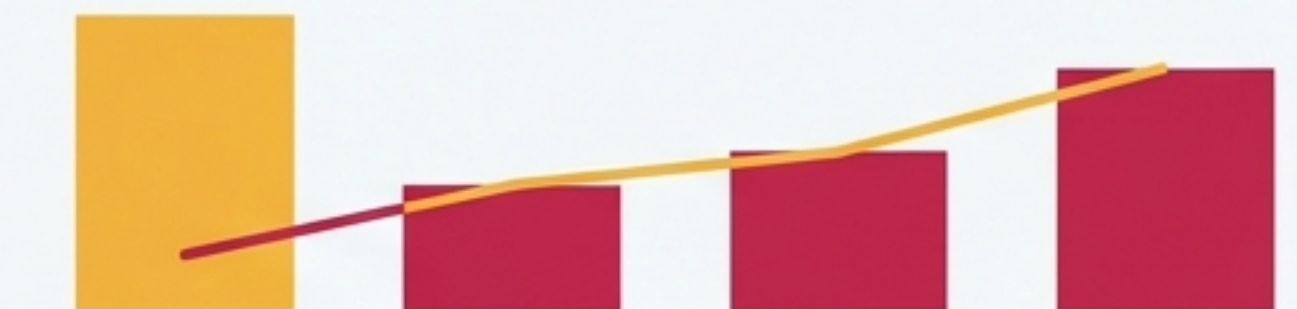
**Detail:** Participation rates in local forums.

### Social Connectivity



**Detail:** Reduction in reported social isolation.

### Public Awareness



**Detail:** Reach of campaigns and perception indices.



# Risks & Mitigation Strategies

## Potential Risk

## Mitigation Strategy



Cultural Resistance: Fear of imposing external values.

Engage local leaders; frame support as enhancement, not replacement.



Economic Pressures: Instability straining ability to engage.

Position policies as long-term cost-saving and productivity measures.



Urbanization/Migration: Disruption of traditional networks.

Urban planning for community spaces and digital connectivity.



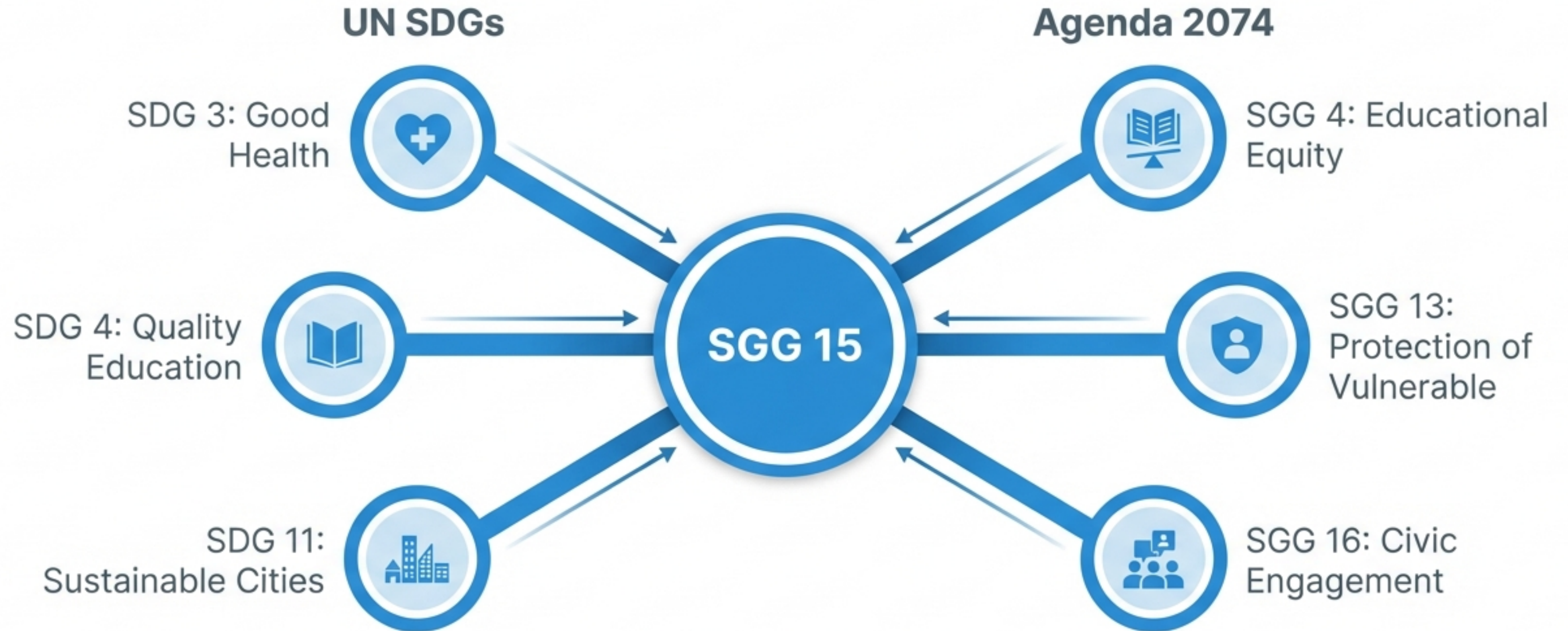
Institutional Capacity: Lack of trained personnel.

Invest in capacity building via SLUC toolkits.





# Alignment with Global Goals





A photograph of a family walking away from the camera on a dirt path in a park. A man in a blue denim jacket and jeans is on the left, holding the hand of a small child in a blue and white checkered sweater. A woman in a blue denim jacket and black pants is on the right, holding the hand of a young girl in a white quilted jacket. The scene is bathed in warm, golden light, suggesting late afternoon or early morning. The background shows trees and grass.

**"Families and communities are the first institutions of care and solidarity. When these bonds are strong, societies thrive."**

**Agenda 2074: Resilience begins at home.**

