



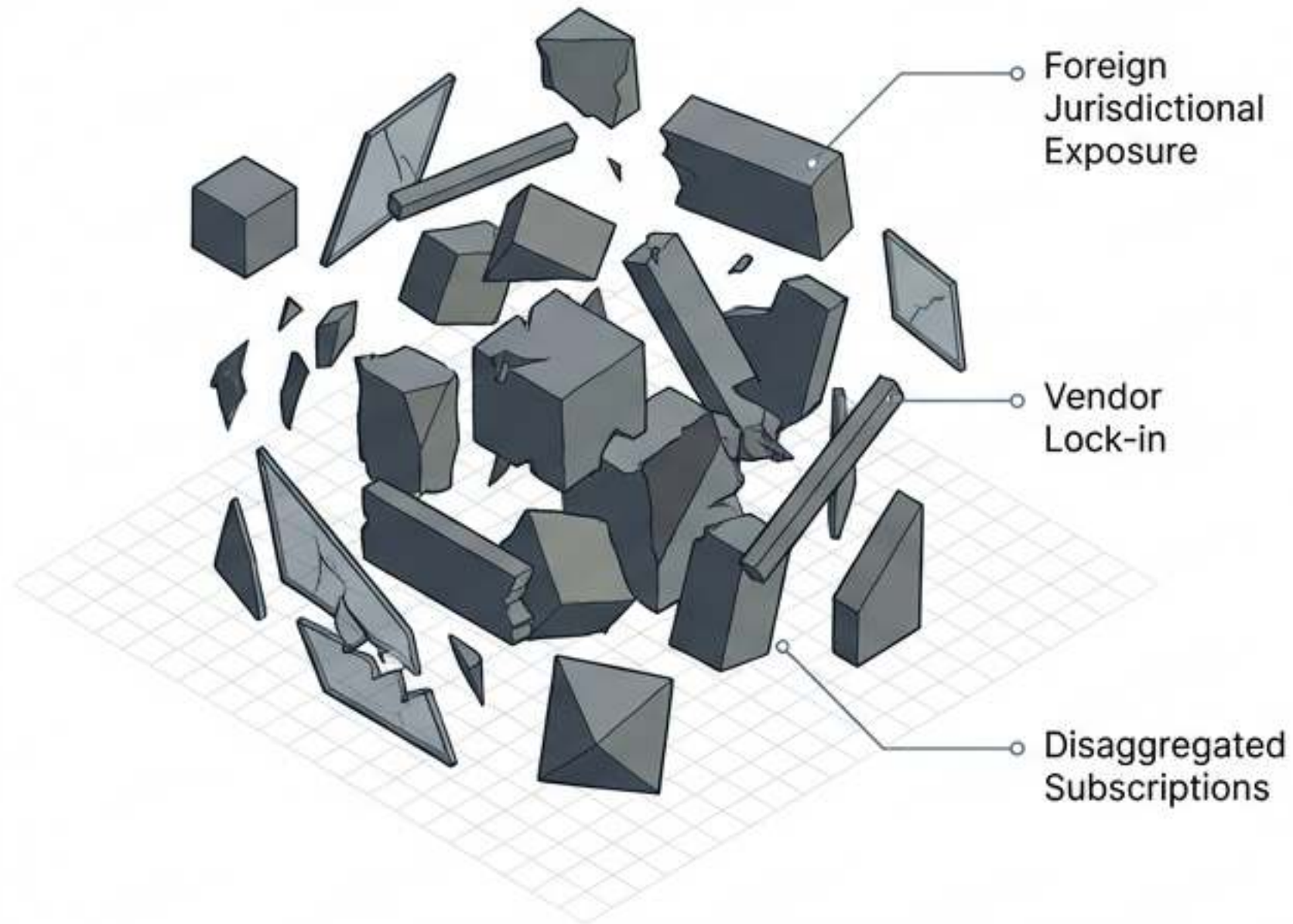
Blueprint for a Sovereign Habitat

The EUSL Sovereign Membership Federation:
A Constitutional Substrate for an Inclusive
Digital Society

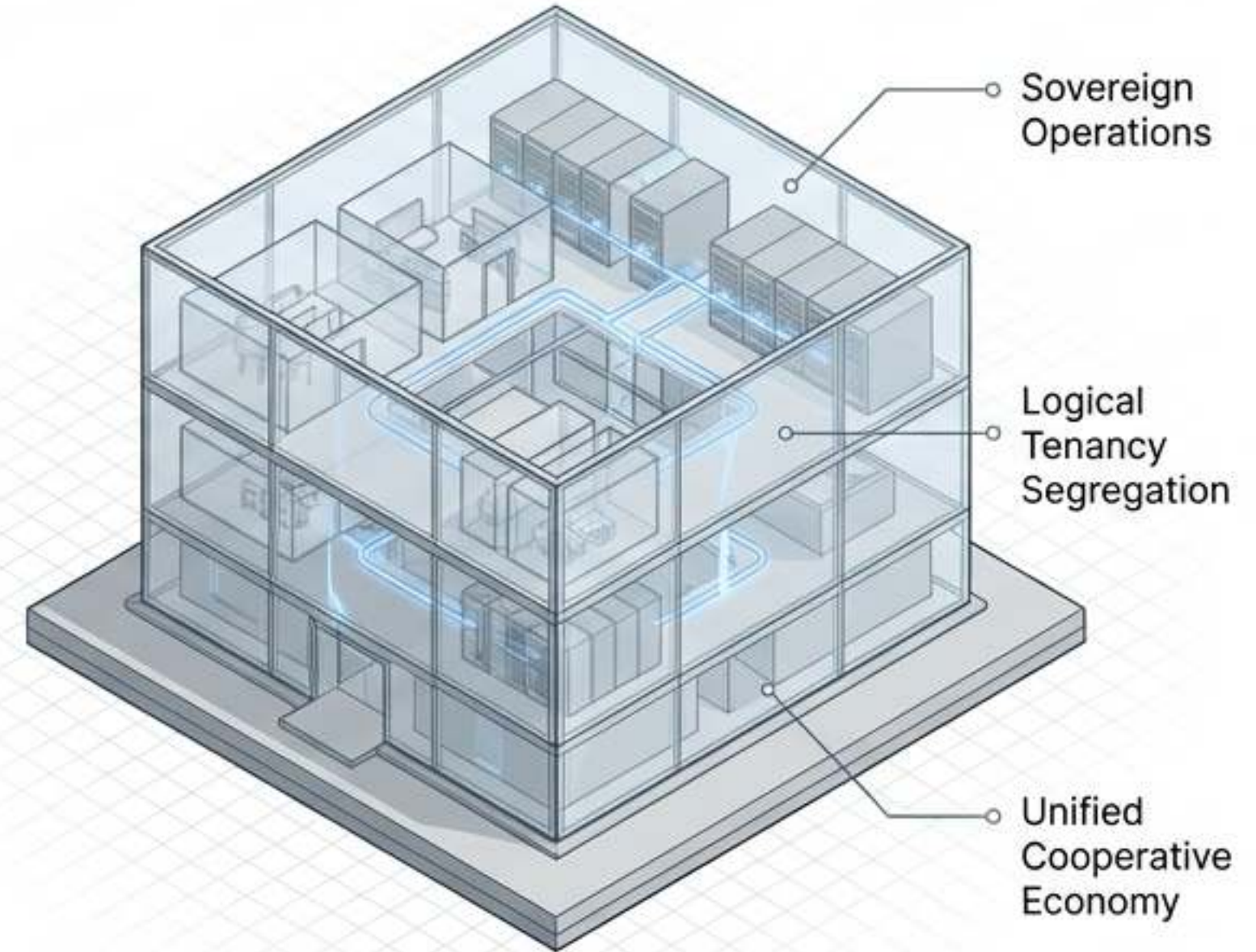
Created by EUSL AB | Care to Change the World

A Constitutional Habitat, Not a Software Product

The Old Paradigm

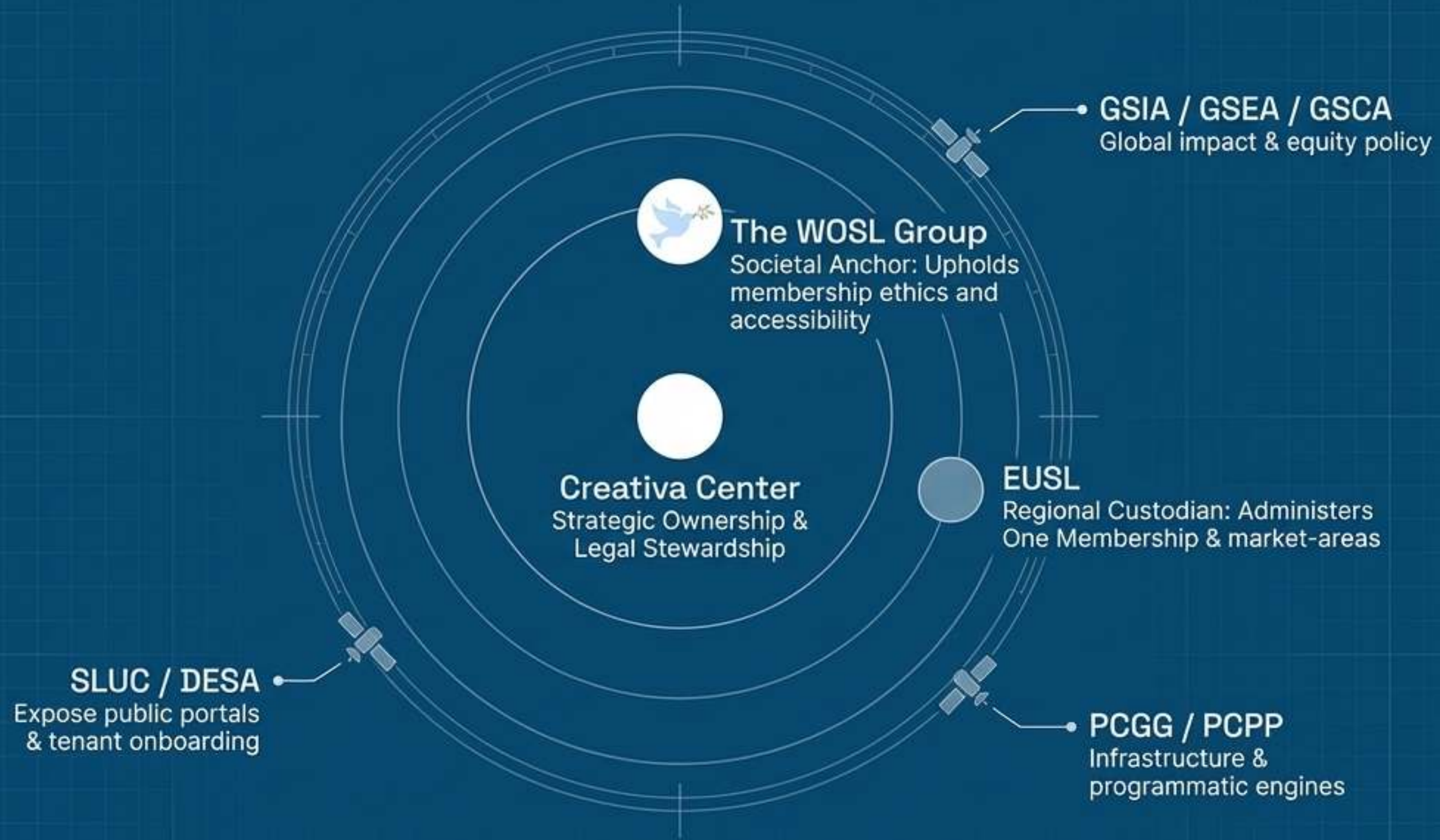


The New Paradigm



Key Insight: The Federation provides one membership which adapts to the role and needs of the member, rather than obliging members to adapt to fragmented tools or foreign jurisdictions.

The Institutional Constellation



The Foundational Doctrines: Rights & Realities (I)



Sovereignty

EU-aligned hosting and exit portability;
absolute preclusion of foreign
surveillance.



One Membership

A single gateway where included
cooperative services fundamentally
exceed retail market equivalents.



Tenancy

Strict legal and logical isolation of
environments with federated identity.



Transparency

Default, auditable disclosure of KPIs,
procurement, and societal outcomes
via public dashboards.



Accessibility

Uncompromising conformance with
inclusion standards across all public
and member interfaces.

The Foundational Doctrines: Rights & Realities (II)



Economic Inclusion

Market rules that preferentially surface member SMEs in procurement and opportunity flows.



Open Standards

Portable formats and public protocols; explicit rejection of proprietary data traps.



Accountability

Comprehensive logging, auditable change control, and binding timelines for ombud redress.



Resilience

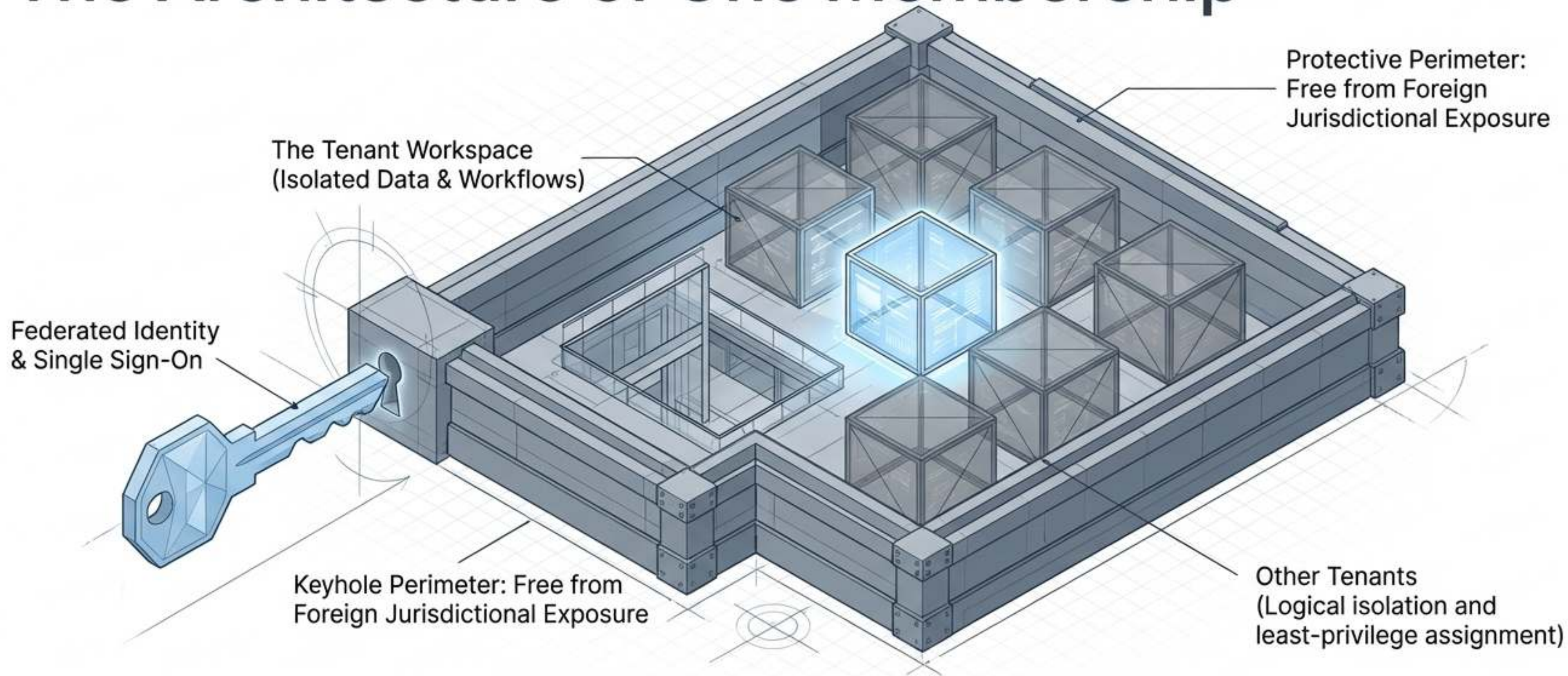
Architectural redundancy, tested recovery, and strict vendor independence.



Responsible Automation

Explainable algorithmic logic with mandatory human review for public-interest outcomes.

The Architecture of One Membership

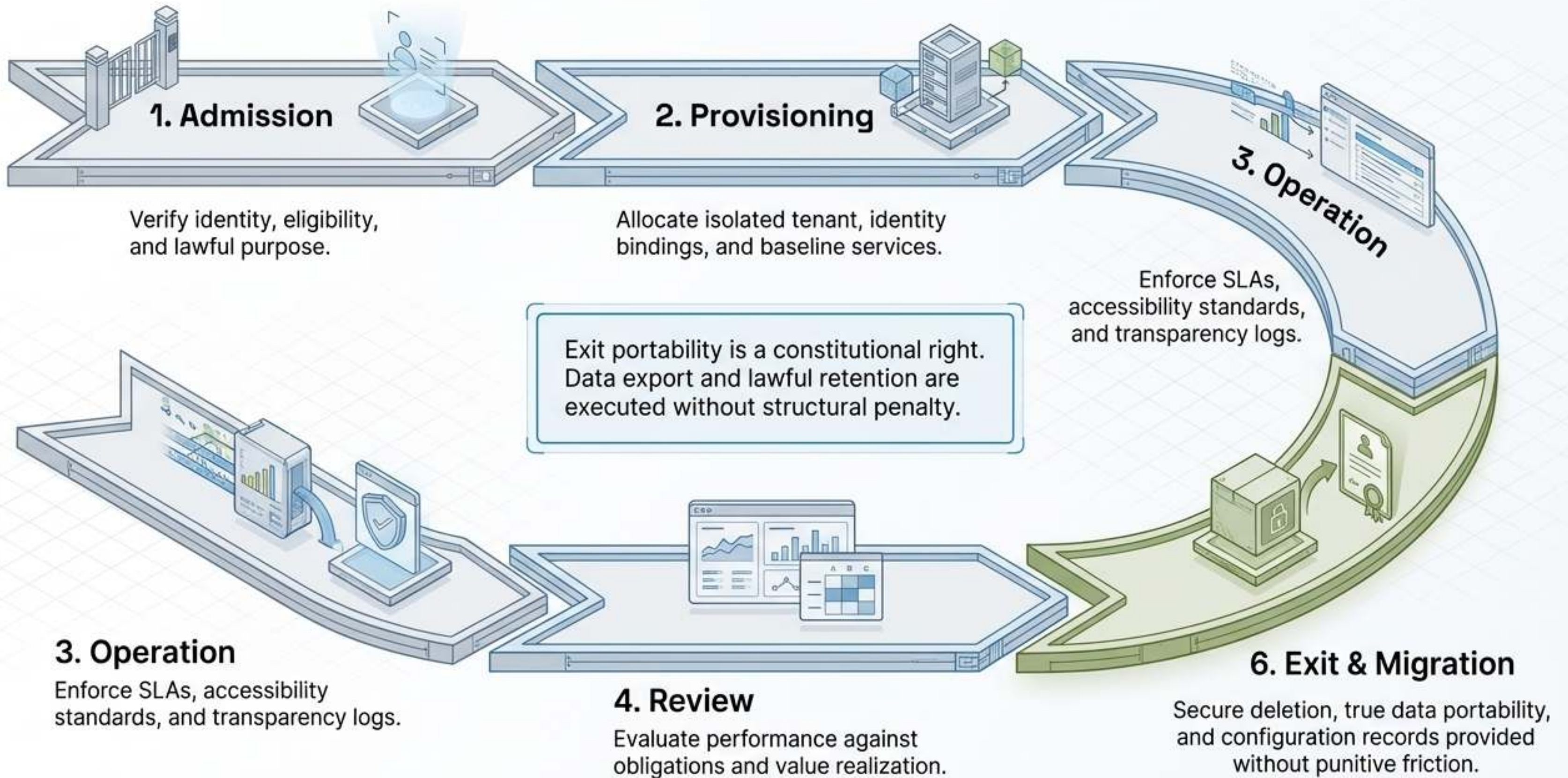


Insight: The right to operate privately never annuls the duty to disclose public-interest information. Identity traverses services; data remains isolated.

The Membership Habitat Matrix

Entity Type	Standing & Purpose	Baseline Tenancy	Expansion Paths
Individual	Personal participation	🛡️ Private workspace, messaging, public access	Expands to Micro-venture
Micro/SME	Local market commercial activity	👛🌐 Business space, sovereign email, market access	Expands to CRM/ERP
Cooperative	Member-based social aims	Multi-user, intranet, event hosting	Expands to Voting platforms
Municipality	Public service delivery	Municipal portal, public notices, transparency boards	Expands to Multi-site archival
Ministry/Agency	National/Sectoral mandates	Regulated data domains, lawful reporting	Expands to Sub-units
DESA Unit	Digital enablement	Training environments, infrastructure telemetry	Expands to Sectoral modules
Enterprise	Large-scale commercial	Dedicated environments, multi-jurisdictional tenancy	Expands to Custom integrations

The Lifecycle of Sovereign Tenancy



The Governance & Assurance Engine

Strategic Layer

Creativa Center
(Stewardship)

WOSL Group
(Cooperative Ethics & Recognition)

Operational Layer

EUSL
(Regional Custodian)

Federation Secretariat
(Platform Control)

Independent Assurance

Audit & Assurance Committee
(Independent findings, binding corrections)

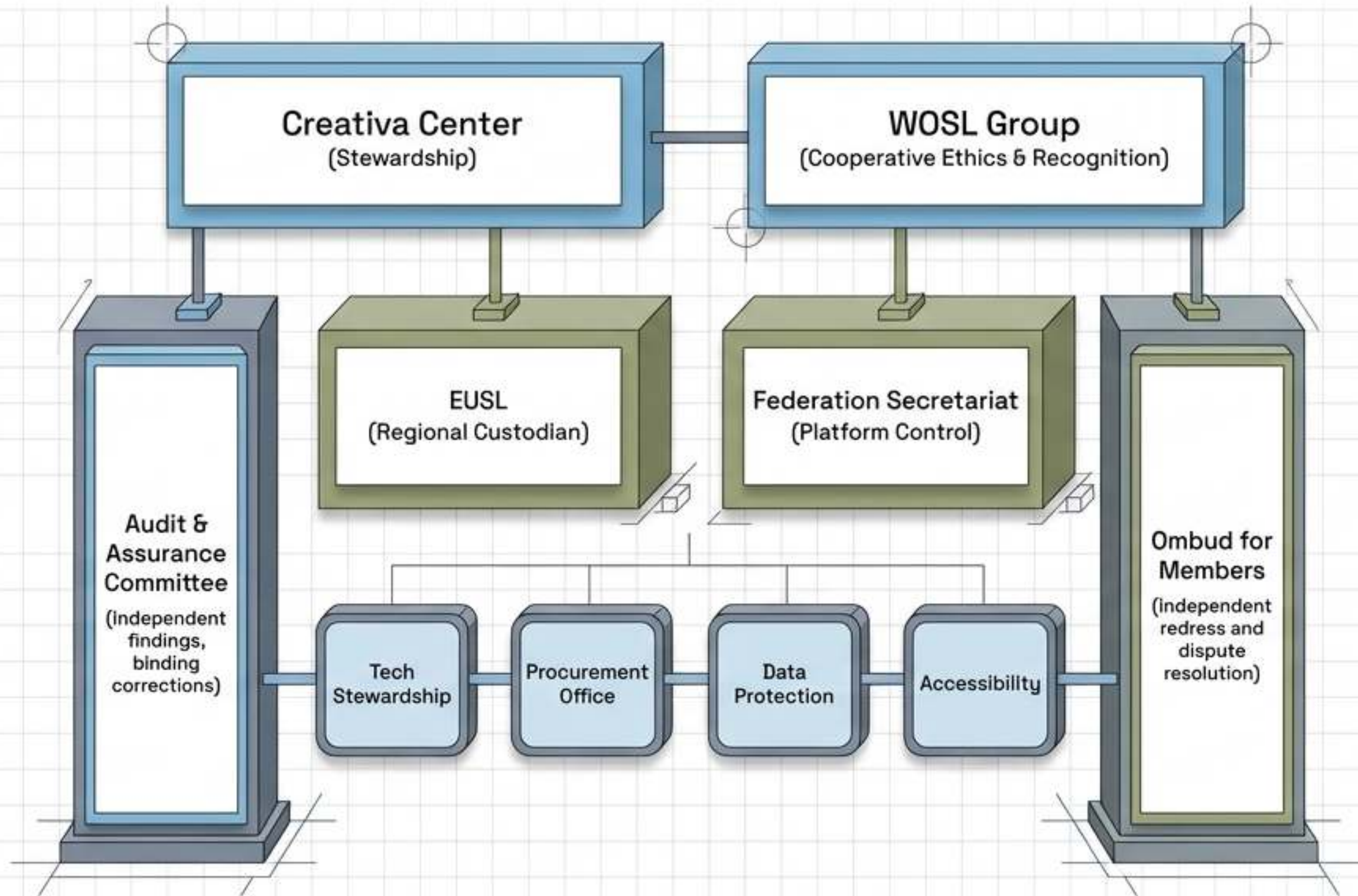
Tech Stewardship

Procurement Office

Data Protection

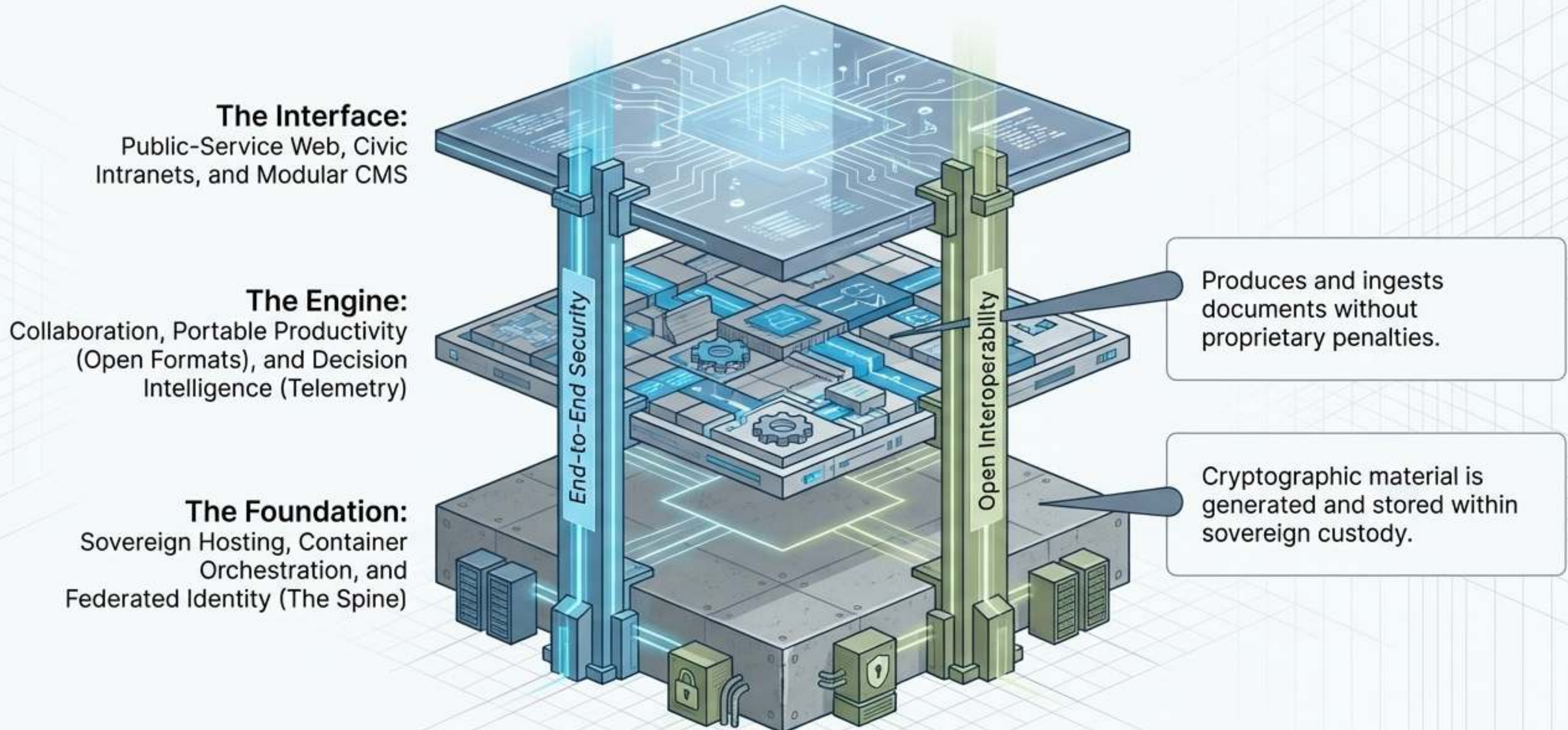
Accessibility

Ombud for Members
(Independent redress and dispute resolution)

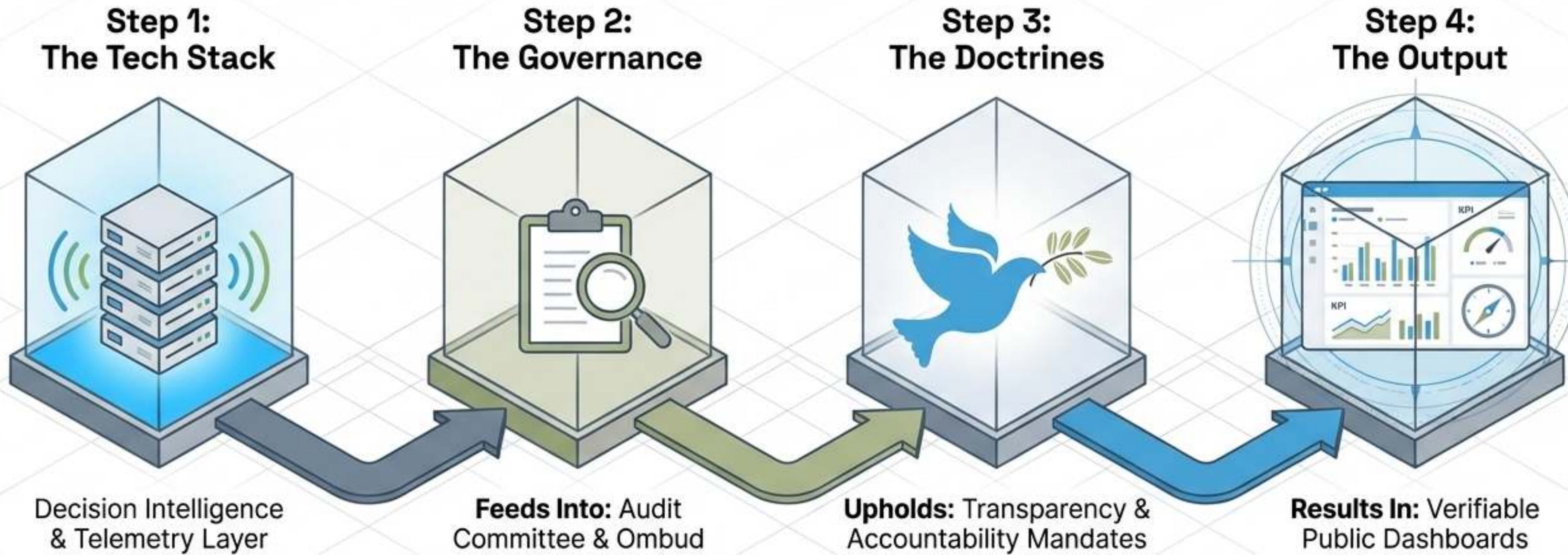


Governance is not abstract—it is the daily choreography of membership, service delivery, and risk mitigation, backed by public audit summaries and escalatable remedies.

The Sovereign Technology Stack



The Transparency & Accountability Engine

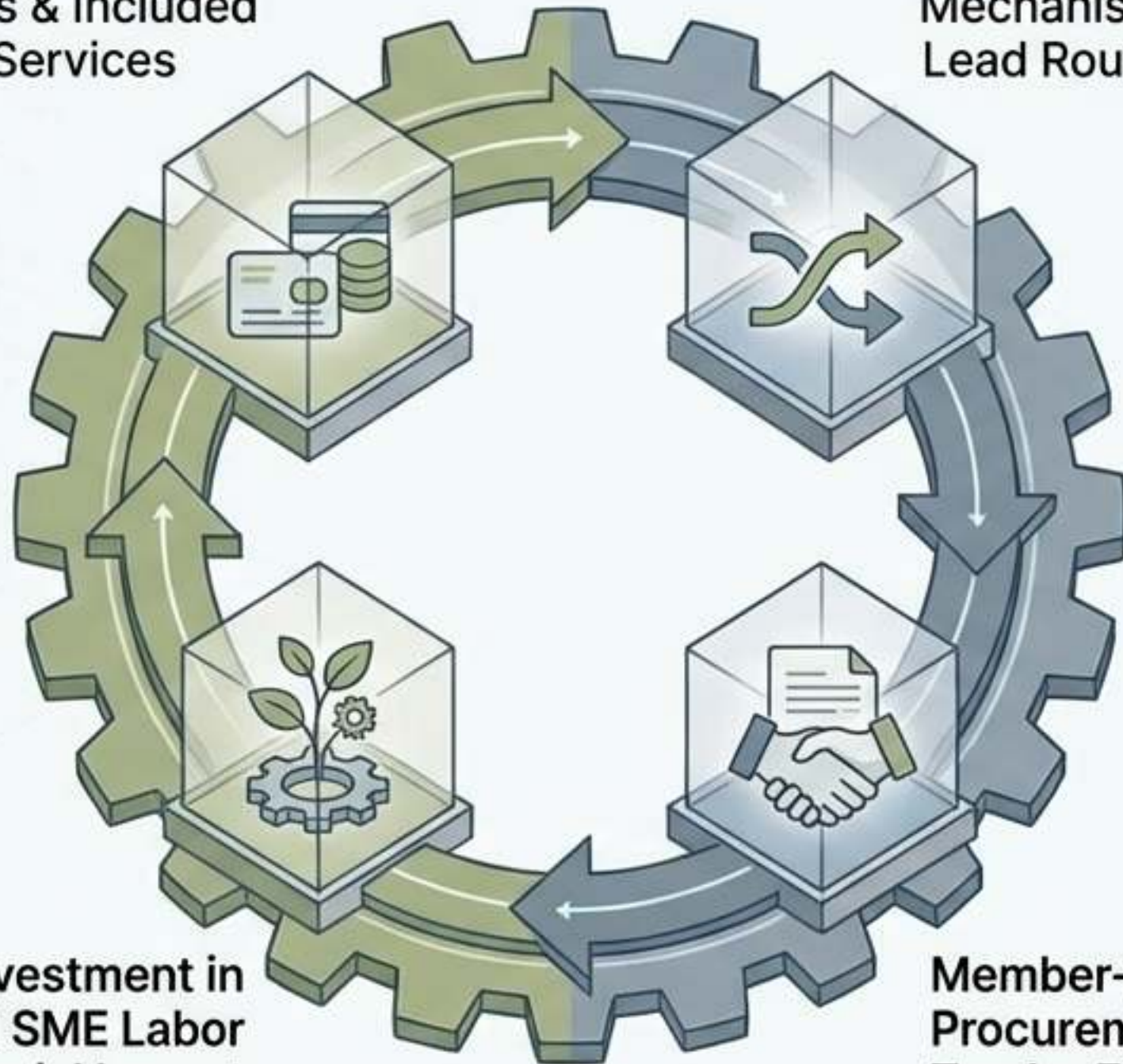


Transparency is an automated, structurally enforced reality. The Federation transcends the left-right divide by replacing political rhetoric with a verifiable, operational ecosystem.

Activating the Cooperative Economy

One Membership
Dues & Included
Services

Internal Market
Mechanism &
Lead Routing



Reinvestment in
Local SME Labor
& Social Impact

Member-First
Procurement &
Tender Eligibility

Membership is an economic gateway. Included sovereign services eliminate duplicate commercial subscriptions, while internal procurement mechanisms preferentially surface local, micro, and cooperative enterprises in opportunity flows.

A Long-Horizon Mandate

- **Agenda 2074 Alignment:** Establishing intergenerational standards for social equity.
- **Unified Purpose:** Reconciling societal aims, local economic needs, and institutional responsibilities into a single habitat.
- **The Invitation:** An open gateway for municipalities, SMEs, and citizens to enter a sovereign cooperative economy.



“The single sovereign place where members live, work, transact, learn, govern, and witness outcomes.”