

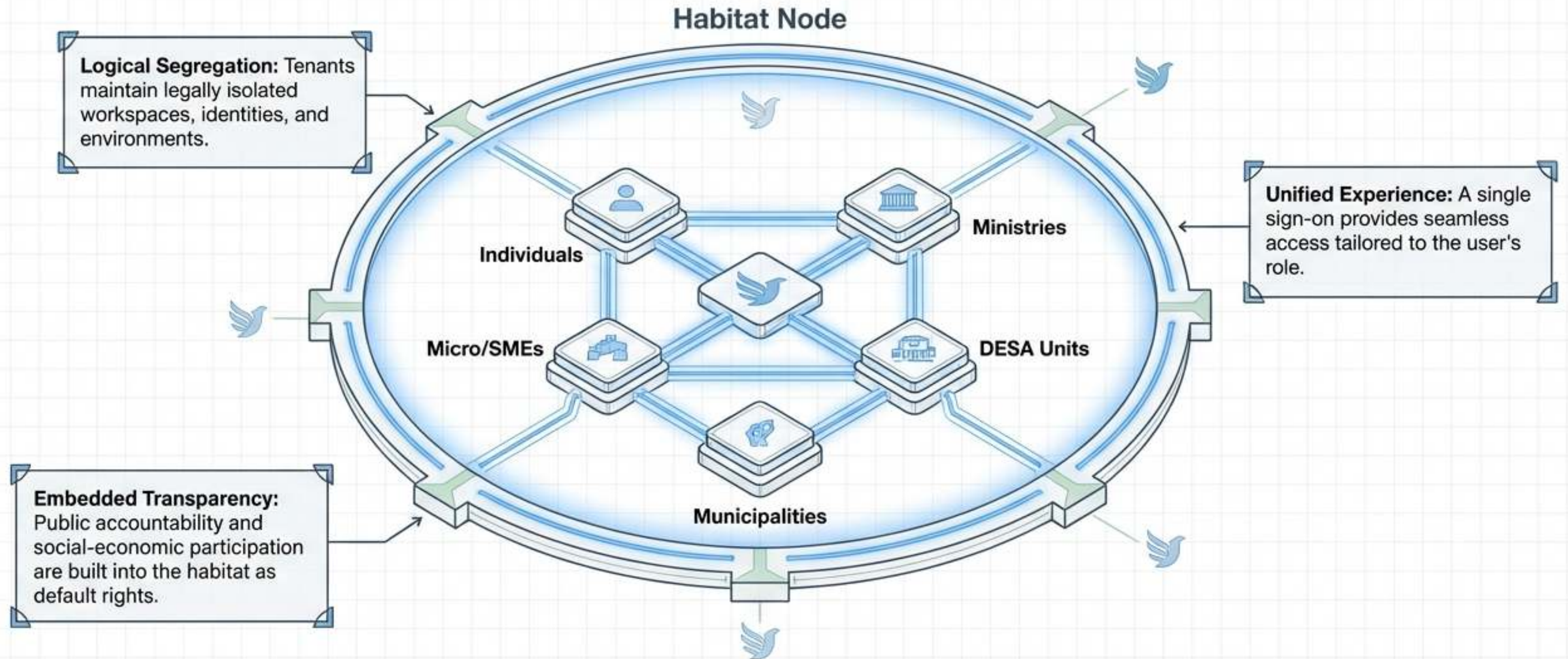


# Architecture of a New Society

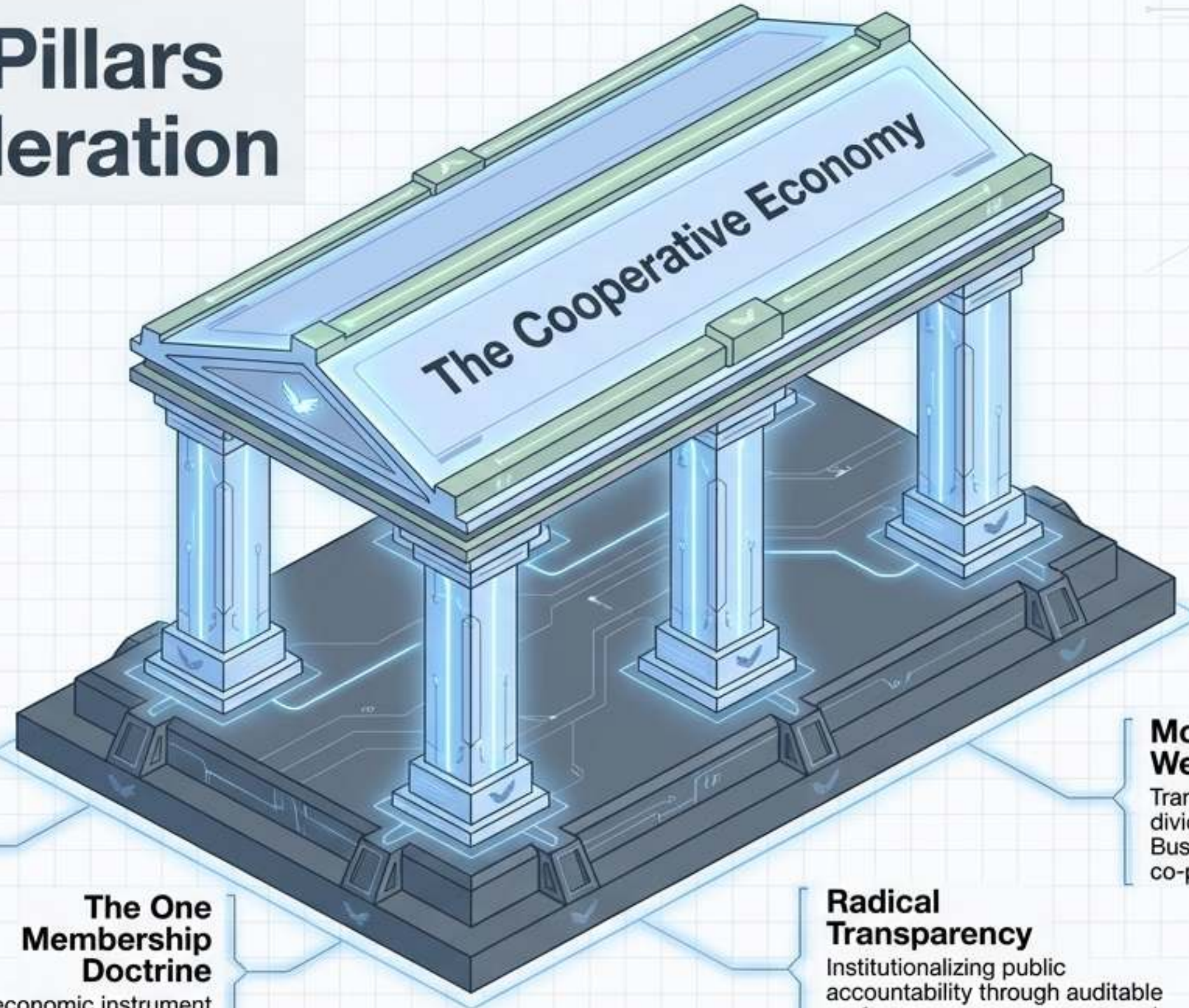
The EUSL Sovereign Membership Federation:  
A constitutional habitat for digital sovereignty,  
economic rationality, and co-production.

# Beyond Platforms: A Sovereign Habitat

The Federation is not a software product.  
It is a constitutional, cooperative, multi-tenant membership habitat.



# The Four Pillars of the Federation



## Technological & Jurisdictional Sovereignty

Guaranteeing environments free from foreign surveillance and proprietary vendor lock-in.

## The One Membership Doctrine

A unified economic instrument that replaces fragmented subscriptions with inclusive capability.

## Modernizing Welfare

Transcending the left-right political divide through the 'Charity as a Business' economic engine and co-production.

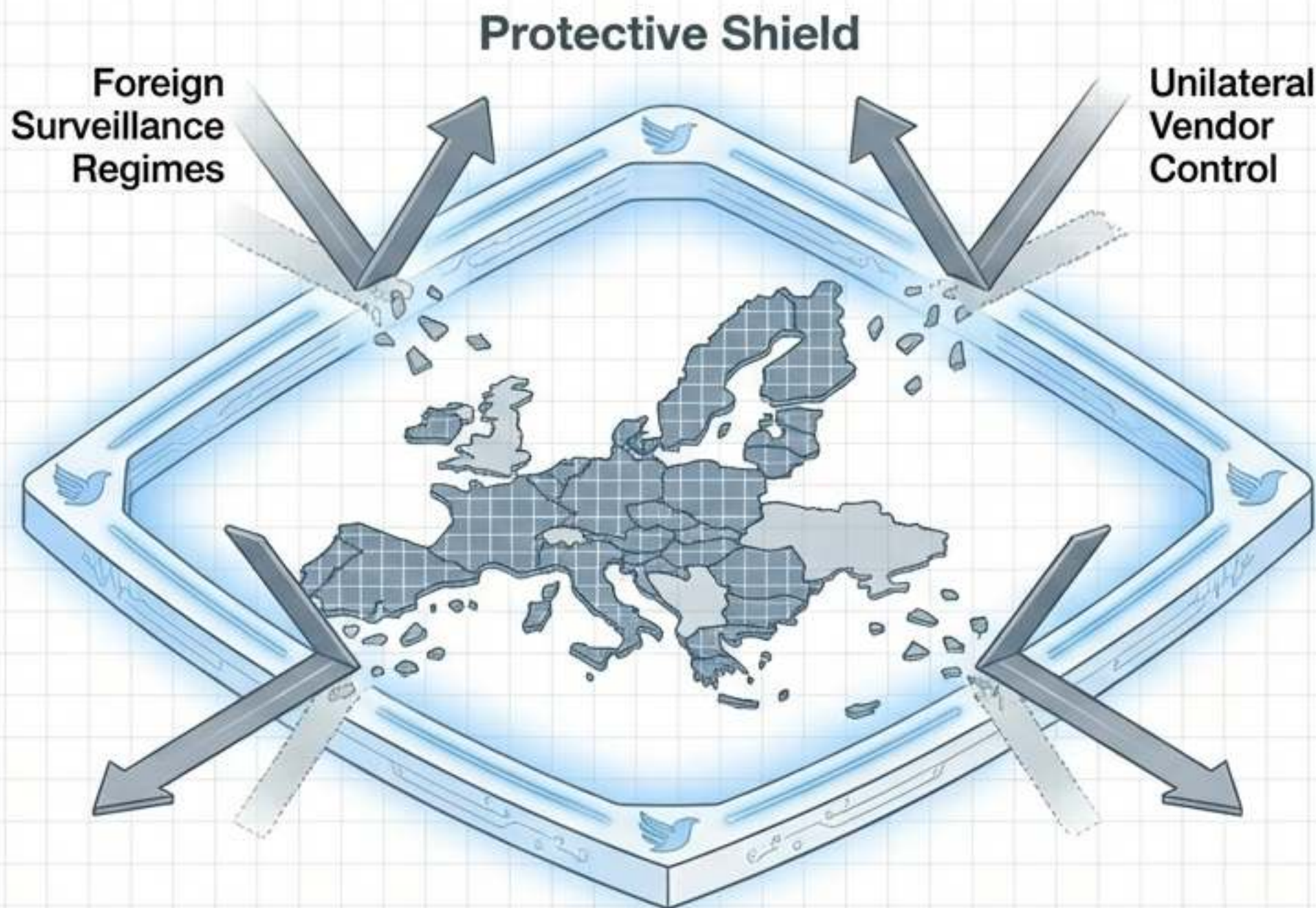
## Radical Transparency

Institutionalizing public accountability through auditable performance, procurement, and impact ledgers.

# Pillar 1: Digital Dignity and Lawful Independence



Sovereignty means technological portability and institutional self-determination.  
Data remains under Federation-controlled keys, precluding dependency on foreign access regimes.



## The Schleswig-Holstein Precedent

- The Alignment:** The Federation codifies the Schleswig-Holstein substitution model as a binding policy precedent.
- The Execution:** Transitioning from proprietary environments to license-free, cooperative software baselines (e.g., LibreOffice, Nextcloud, Linux).
- The Result:** Recapturing value by terminating enterprise licenses at scale and retaining total custodial control over public and private data.

# The Sovereign Technology Stack

## Layer 3: The Public Transparency Layer (Municipio)

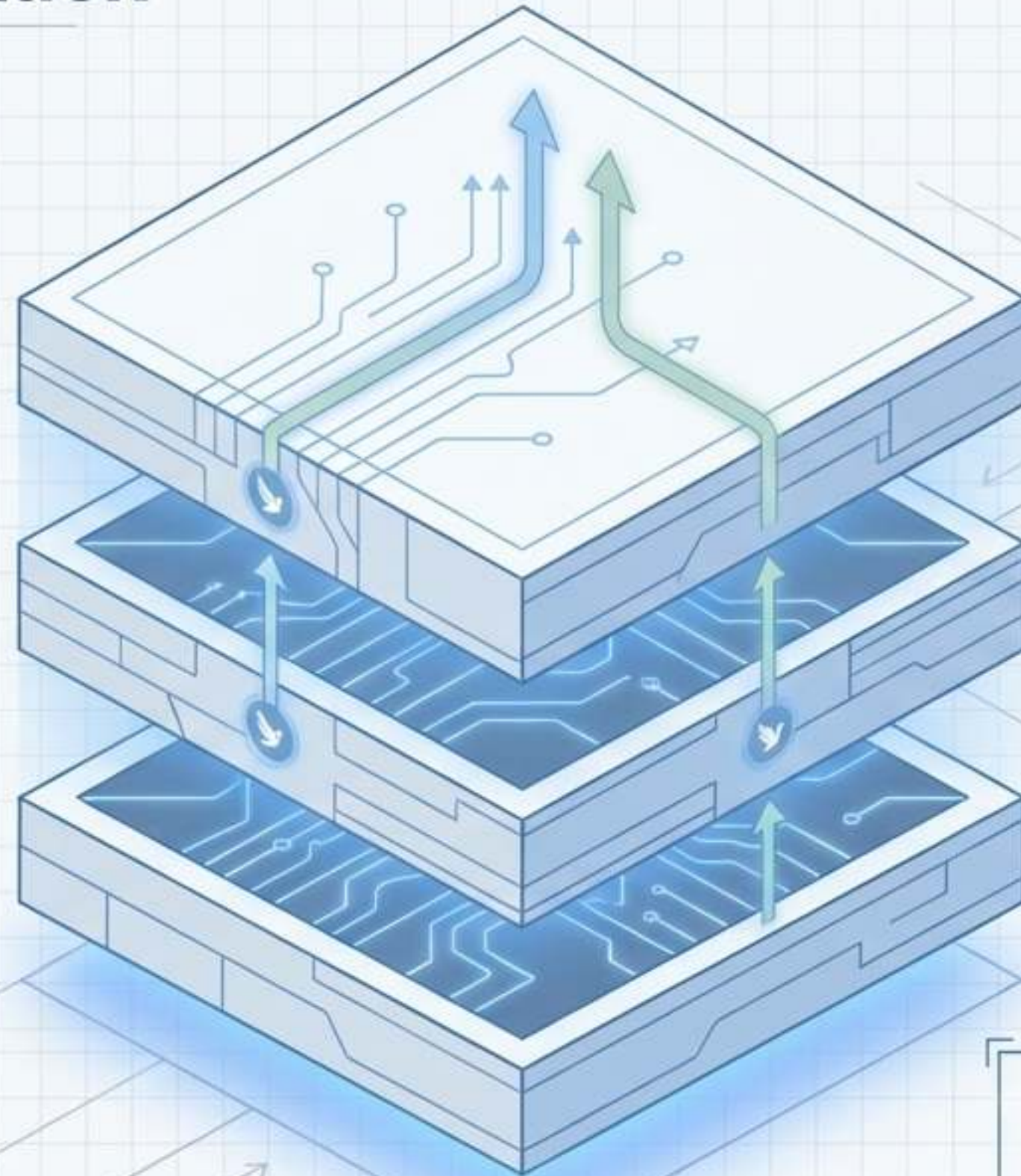
Accessible templates, directories, and public service portals. Swedish public-sector open-source precedent. WCAG 2.1 AA compliant by default.

## Layer 2: Decision & Control (flexSus and ECHO)

The telemetry and intelligence layer. Embedding transparency into physical infrastructure and managing role-based orchestration.

## Layer 1: Infrastructure & Data Sovereignty

EU-aligned or equivalent hosting. Strict residency rules. Data accessible only under Federation keys.

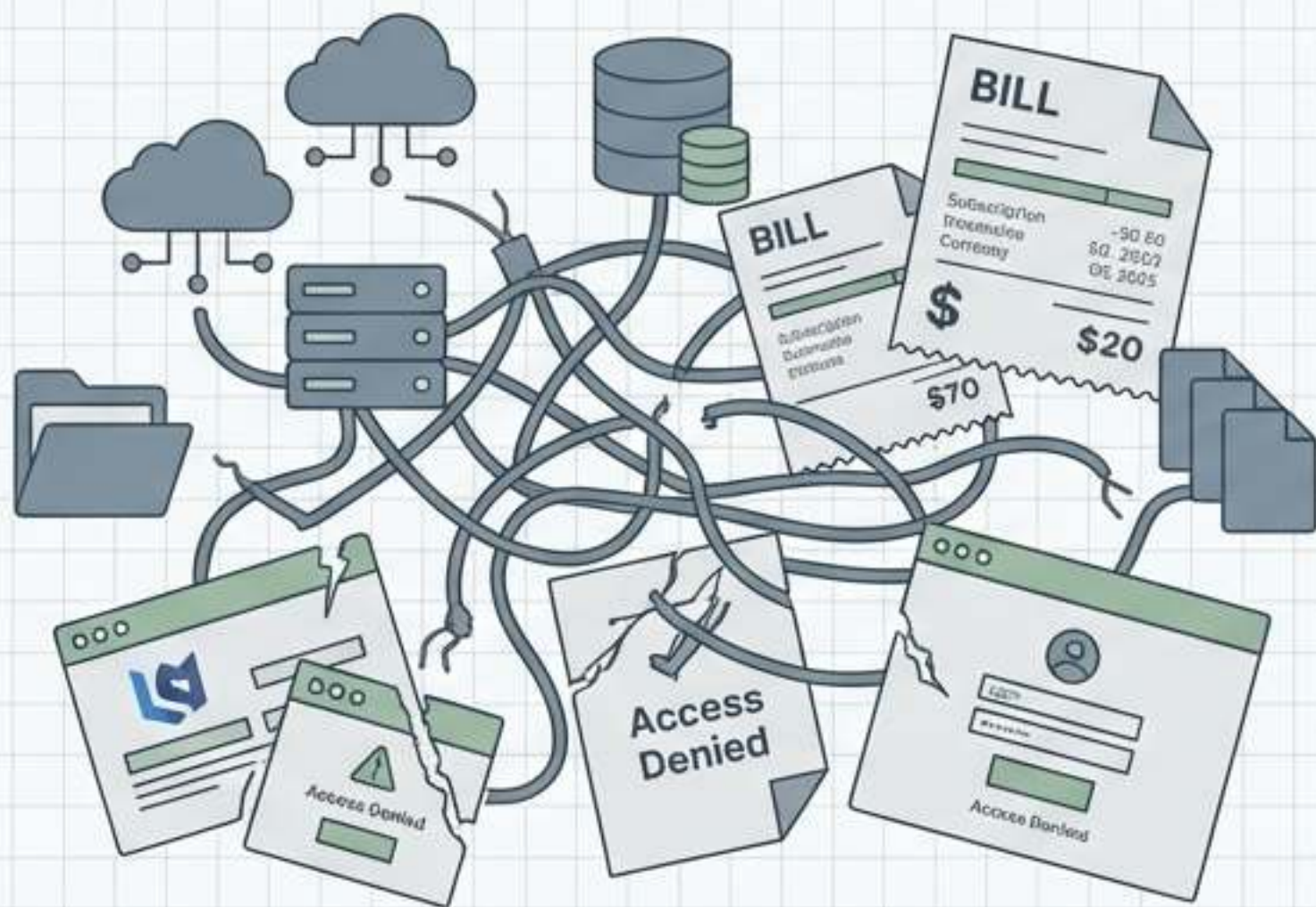


**Portability by Design:**  
The stack is modular.  
Components are replaceable  
without structural penalty  
or data loss.

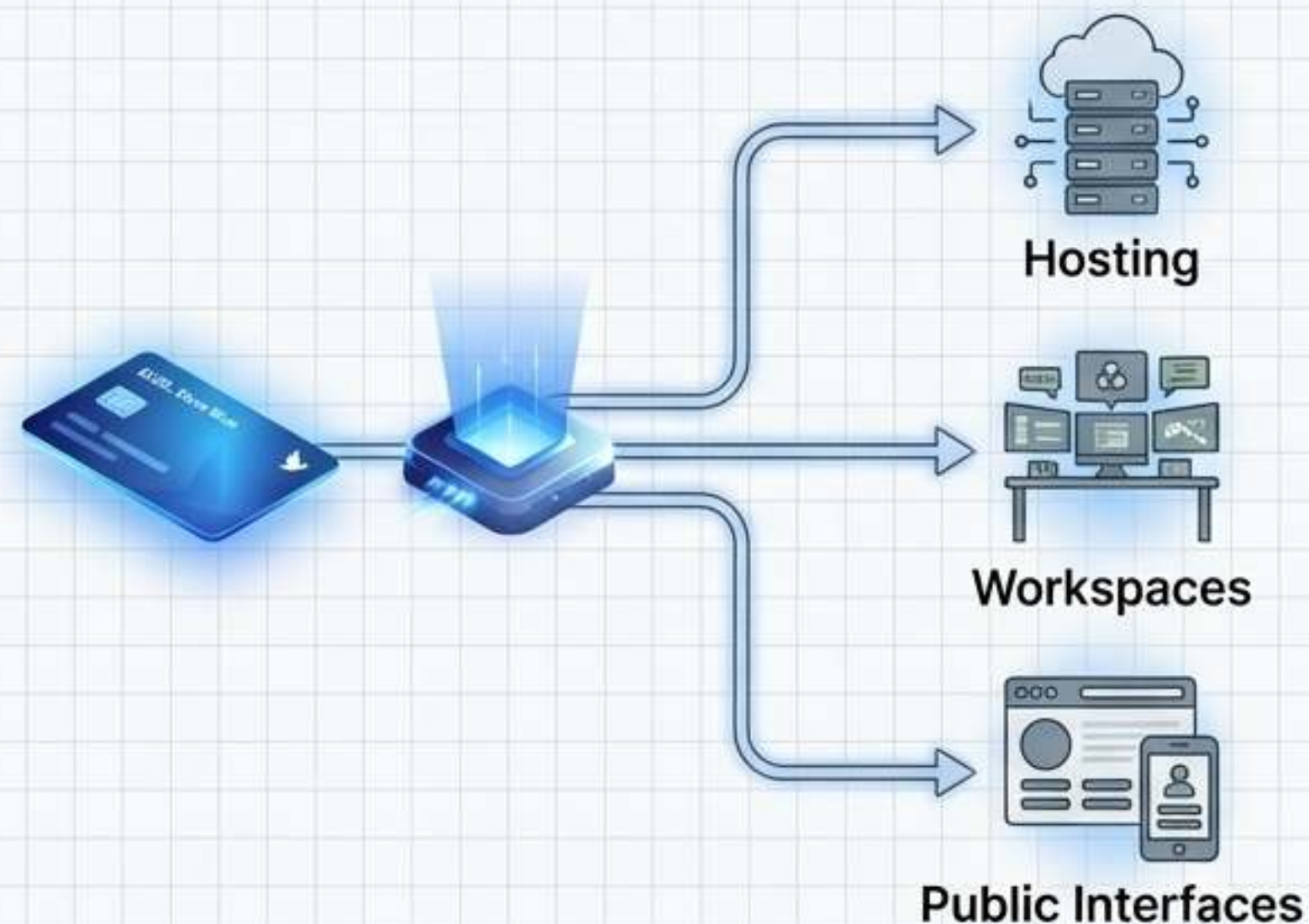
# Pillar 2: The One Membership Doctrine



Membership is an economic instrument, not marketing copy. It consolidates communication, hosting, business systems, and public interfaces into a single cooperative baseline. It adapts to the user's role—whether citizen, SME, or Ministry—so they are never forced to adapt to fragmented, proprietary tools.





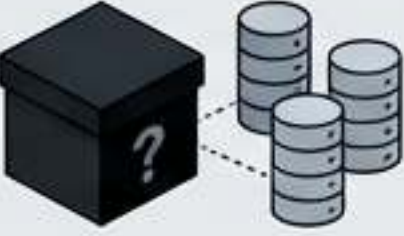

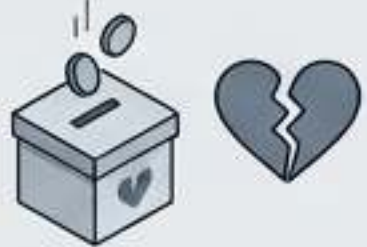



**The Friction of Disaggregation**

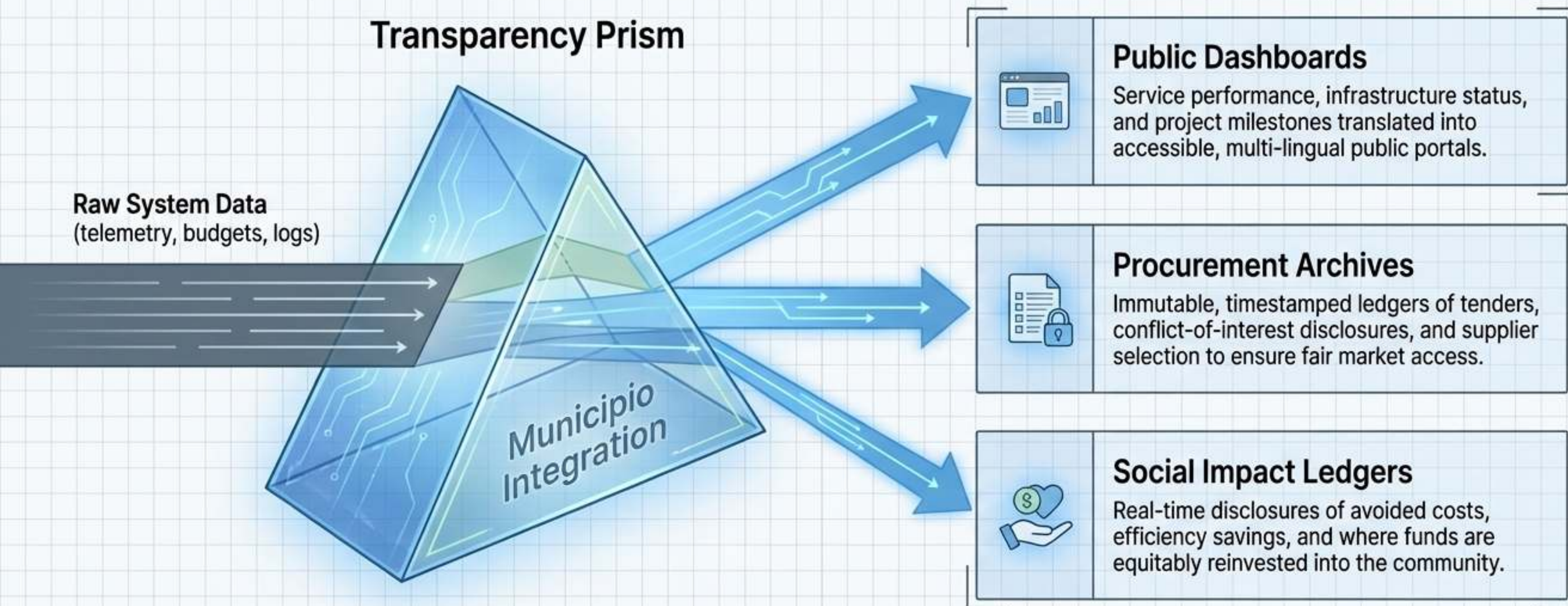


**The Rationality of One Membership**

# The Paradigm Shift

|                  | Traditional Paradigm  | EUSL Paradigm   |
|------------------|---|---|
| Technology       |  <p>Proprietary Vendor Lock-in &amp; Extra-territorial Surveillance</p> |  <p><b>Open Standards, Portable Formats &amp; Jurisdictional Custody</b></p>                       |
| Economics        |  <p>Fragmented, duplicative SaaS subscriptions</p>                     |  <p><b>One Unified Membership</b> with baseline capabilities included</p>                         |
| Governance       |  <p>Opaque operations and siloed data hoarding</p>                    |  <p><b>Radical Transparency</b> and embedded public-interest ledgers</p>                         |
| Welfare & Impact |  <p>Episodic philanthropy and disconnected charity</p>                |  <p><b>'Charity as a Business'</b>—social impact funded as a continuous function of commerce</p> |

# Pillar 3: Institutionalizing Radical Transparency



Transparency is the standing duty of the habitat. It is the method by which social impact is proven.

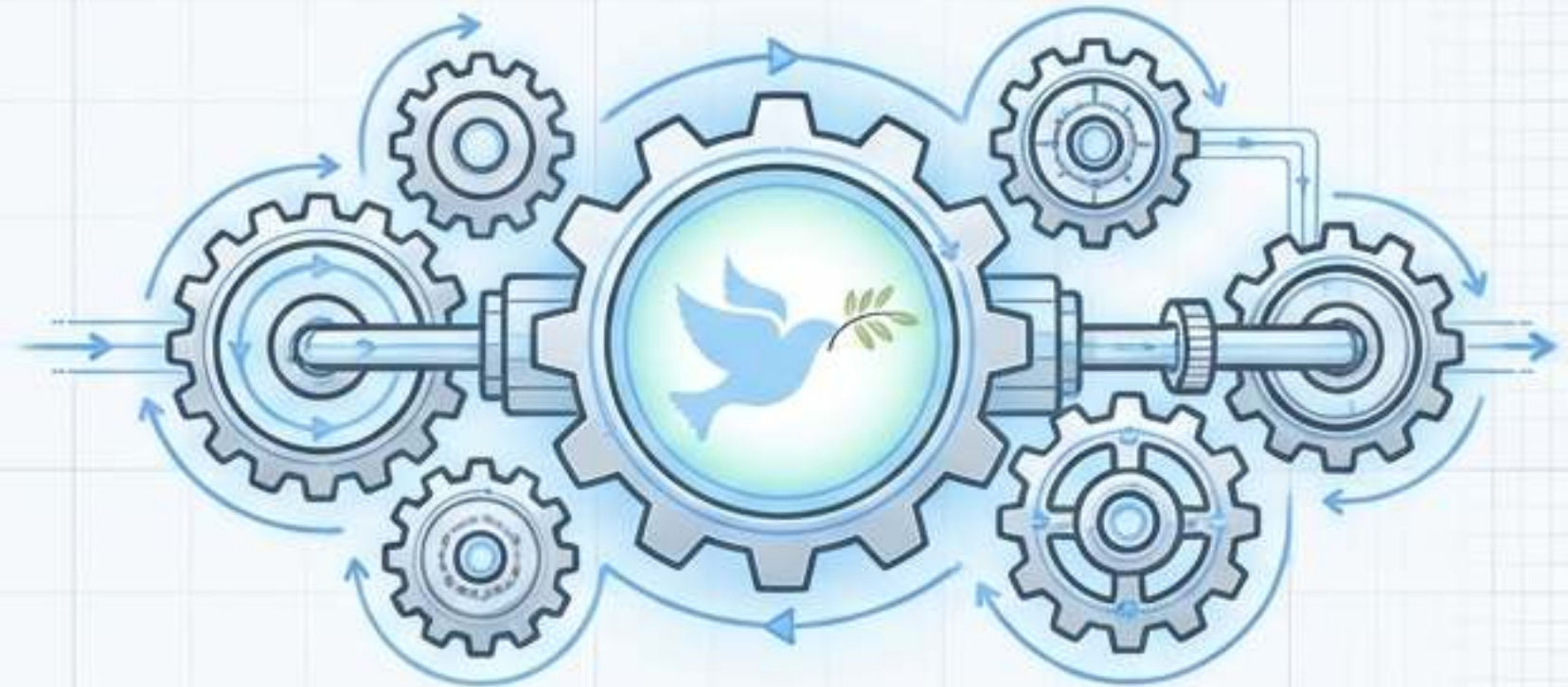


# Pillar 4: 'Charity as a Business'

The Federation rejects the model of exclusion addressed by episodic assistance. Instead, we channel a defined portion of membership economics directly into accredited social outcomes.



Intermittent Philanthropy



Continuous Economic Engine

## Key Pillars of the Engine

### Included Value

Consolidating tech overhead creates realized financial efficiencies.

### Equitable Reinvestment

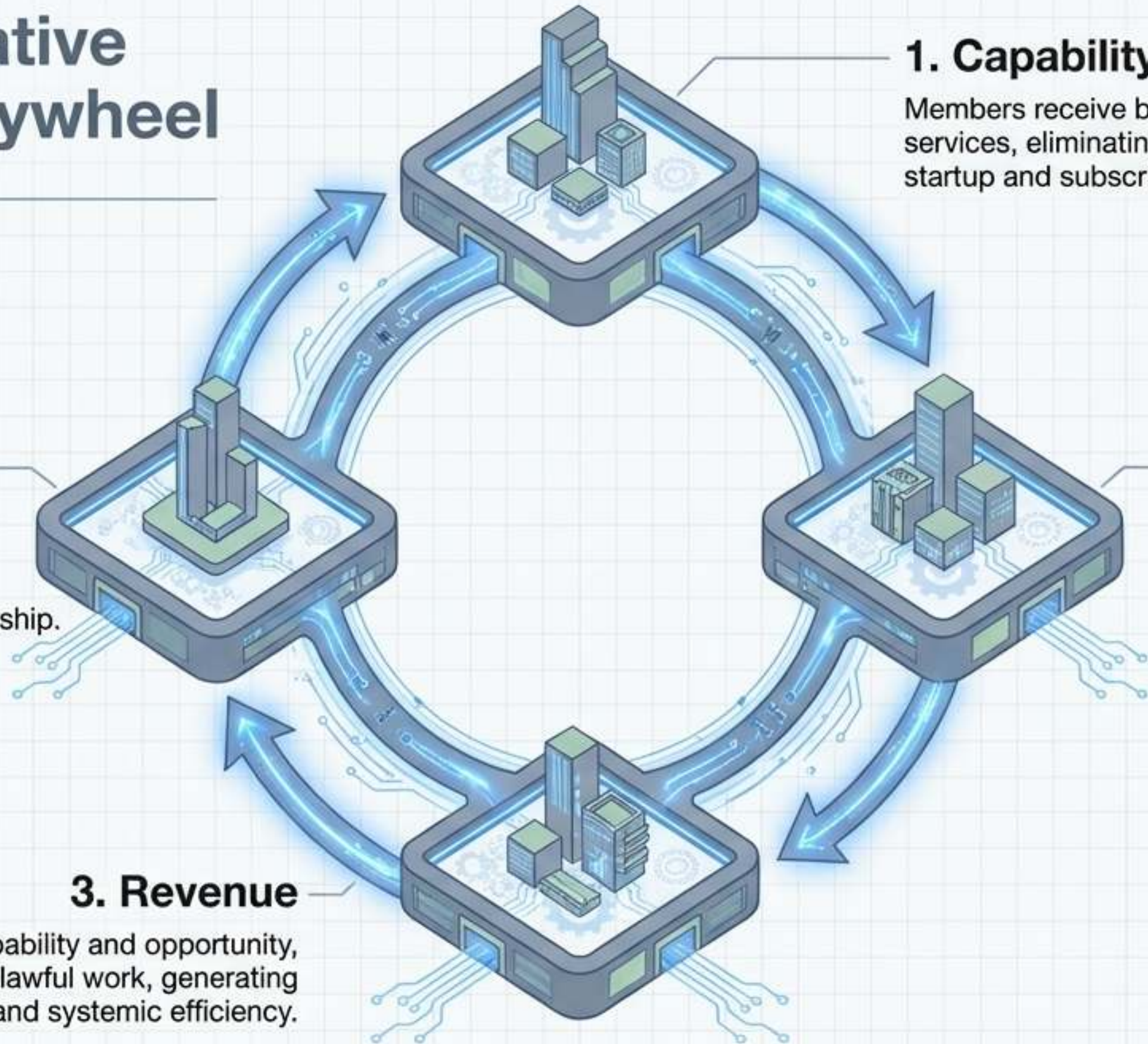
These exact savings are diverted to accessibility remediation, training, and micro-enterprise onboarding.

### Built-in Action

Members sponsor visible, auditable social action simply by conducting their daily commerce within the sovereign habitat.



# The Cooperative Economic Flywheel



## 1. Capability

Members receive baseline sovereign services, eliminating prohibitive startup and subscription costs.

## 2. Opportunity

The internal marketplace and referral engines provide fair, transparent routes to procurement and tenders.

## 3. Revenue

Equipped with capability and opportunity, micro/SMEs win lawful work, generating revenue and systemic efficiency.

## 4. Reinvestment

A portion of habitat revenue sustains social programs, expanding the market and increasing the value of membership.



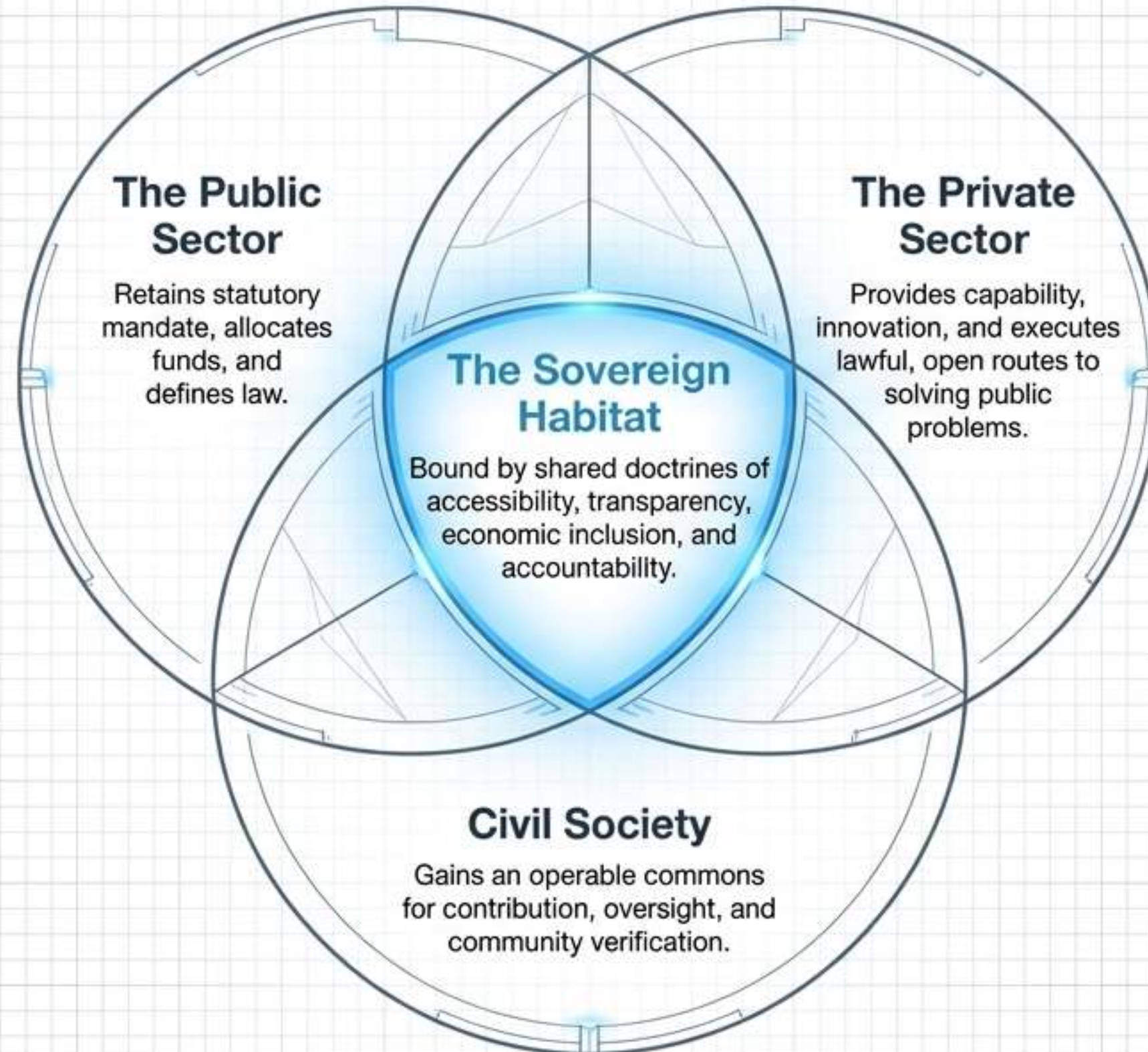
# Modernizing the Welfare Settlement

Modern welfare requires universality, sustainability, and trust. Legacy arrangements fail to combine these, trapped in an inherited left-right polarity.

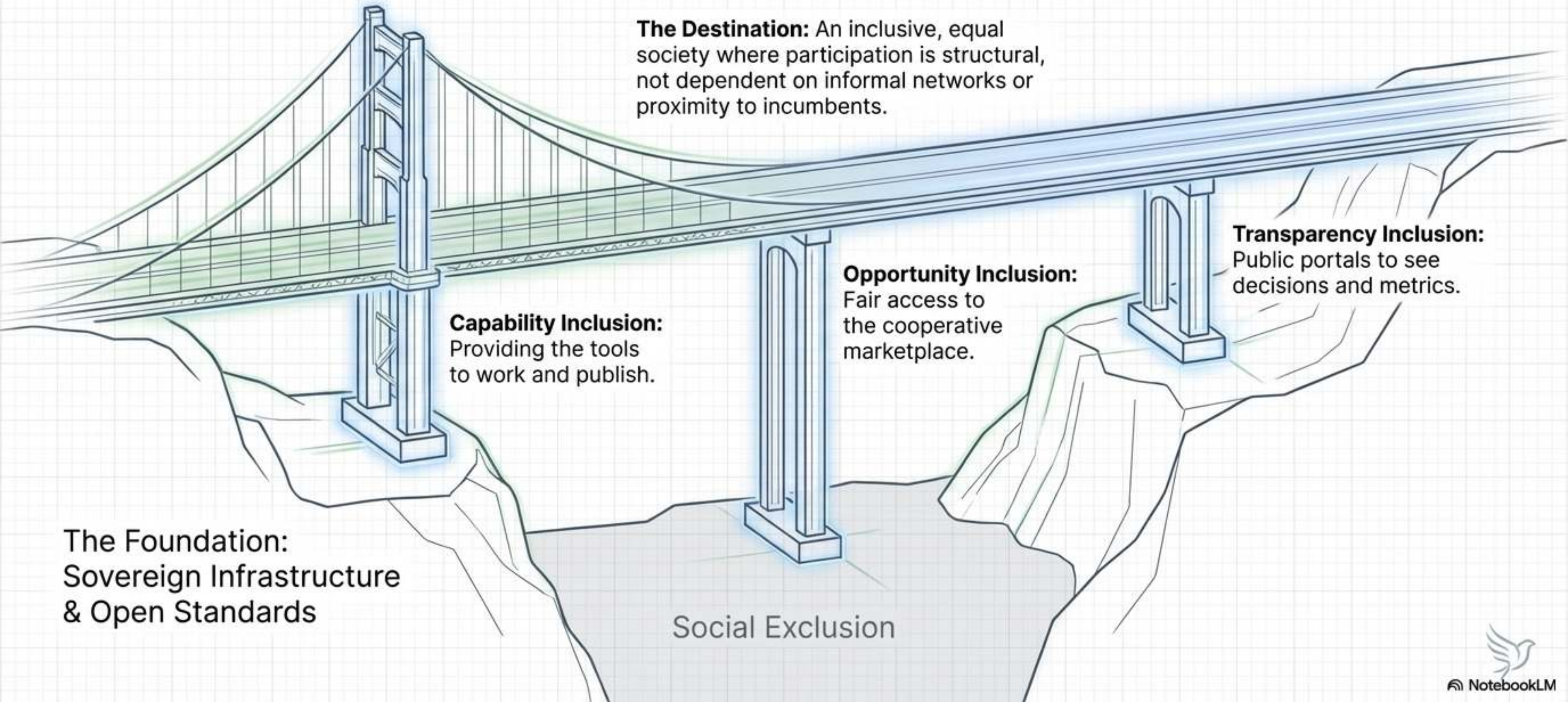


**The Transformation:** The Federation defuses the argument between "more state" or "more market." It re-platforms welfare collaboration, substituting political slogans with empirical evidence, and replacing passive assistance with active co-production.

# The 'Co-Production' Model



# Synthesis: The Membership Bridge



# The Reputational Dividend

Pro-social conduct yields market dividends. Recognition in the Federation is never purchased; it is earned through compliance, participation, and verifiable outcomes.





# A Sovereign Invitation

“ An invitation to build a welfare ecosystem that measures what matters, rewards what works, protects what is dignified, and makes cooperation the default. ”

Join a constitutional economy of trust—a place where cooperation is cheaper than conflict, impact is more valuable than posture, and dignity is preserved by design.